

# Examination Procedure

## Japan Patent Office

0

---(Slide 0)---

Now let's start the examination procedure lecture.



- I. Overview
- II. First Action (FA)
- III. Second Action (SA)

1

---(Slide 1)---

The outline of this lecture is as follows:

1. Overview
2. First Action
3. Second action



I. Overview

II. First Action (FA)

III. Second Action (SA)

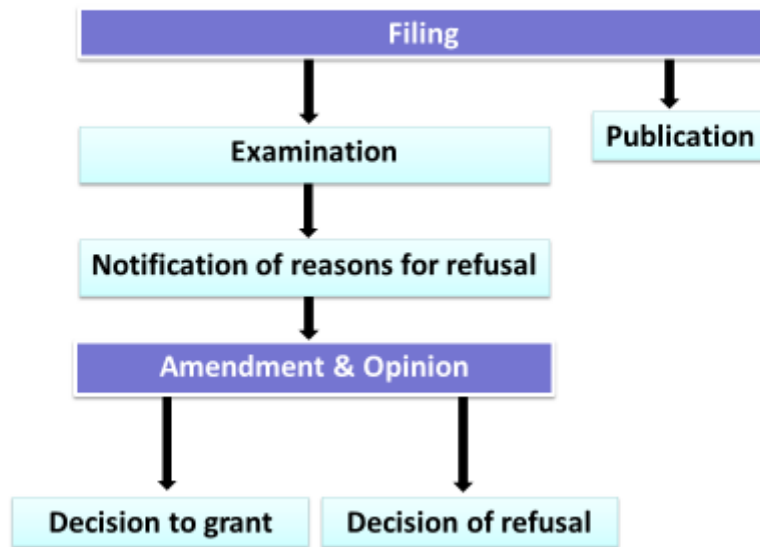
2

---(Slide 2)---

First, let me explain the overview.



### A. General Flow of Patent Examination



3

---(Slide 3)---

This flow chart shows the general global flow of patent examinations.

The deep-blue colored boxes with white characters indicate actions by applicants.

The light-blue colored boxes with black characters show actions by patent offices.

It begins with a patent application being filed by an applicant.

The application will be published.

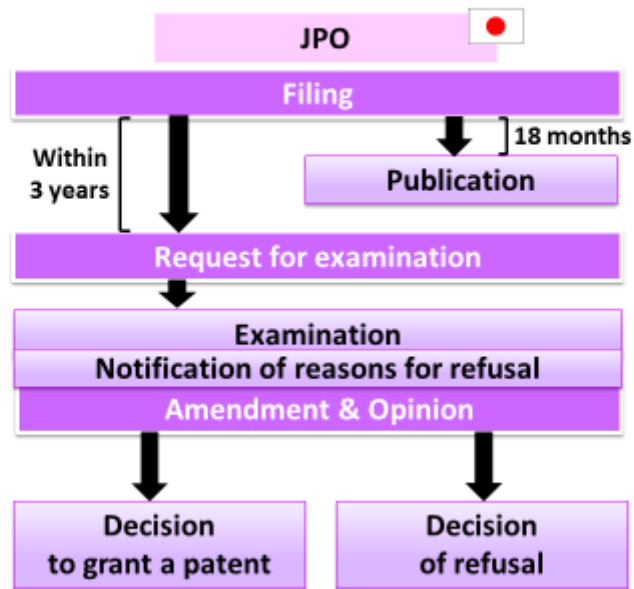
After filing, a patent examiner will then examine the application and send notification of reasons for refusal.

After that, the applicant will amend the claims of the application and submit an opinion.

Finally, the patent examiner will judge whether the application should be granted or refused.



### B. Flow of Patent Examination (JP)



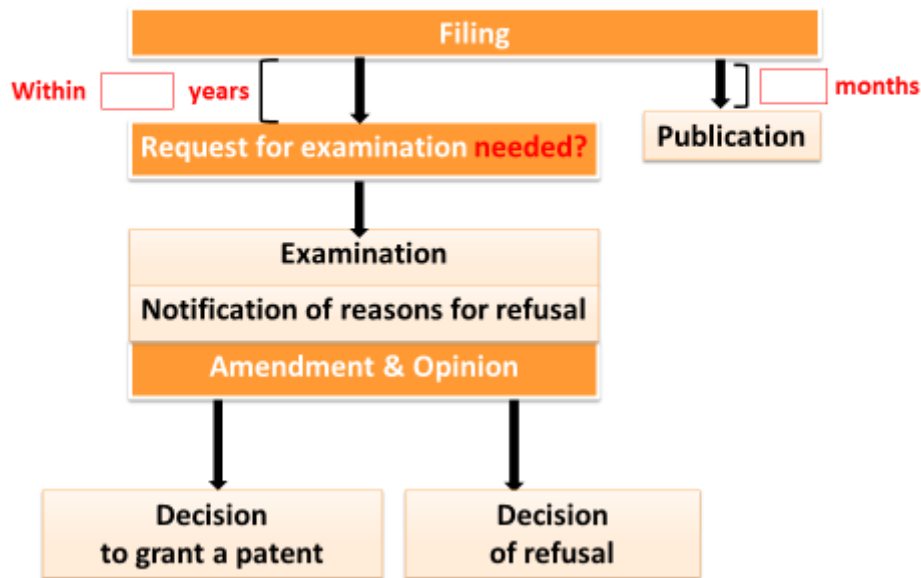
---(Slide 4)---

This is the examination flow of the Japan Patent Office.

In Japan, a patent application is published 18 months after filing. A request for the examination within 3 years from filing date is necessary in order to initiate the examination.



### C. How about your country?



5

---(Slide 5)---

How about your country?

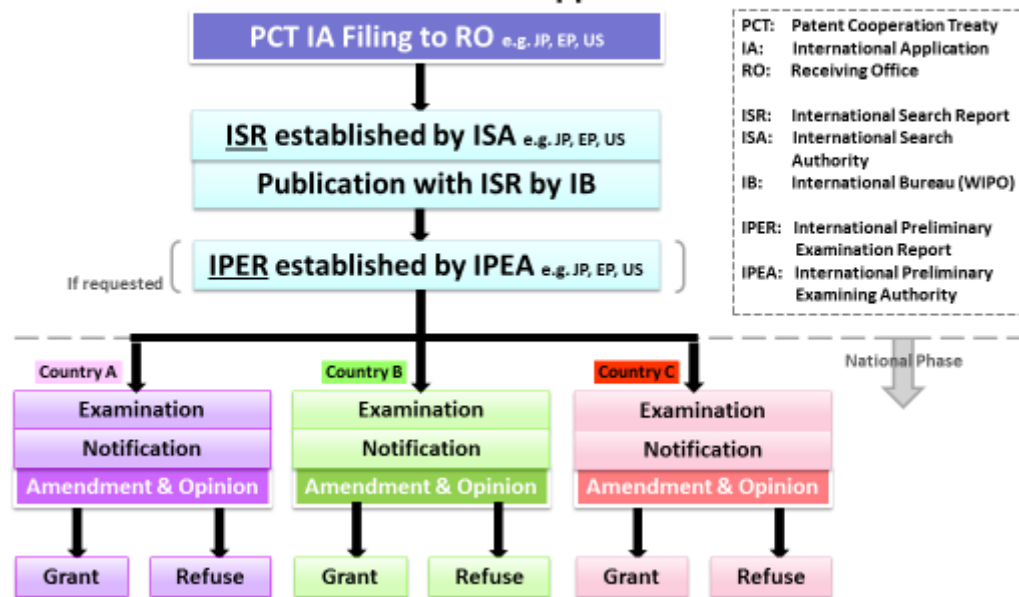
How long will it take from filing to publication?

Is a request for examination needed?

Within how many years can the request for examination be made?



## D. Flow of Examination of PCT Application



6

--- (Slide 6) ---

This is the flow of a PCT international application. This begins as a single “international” application, and can spread to many countries as one patent application in each country.

The granting of patents, however, remains under the control of the national patent offices in what is called the “national phase.”

A PCT application is submitted to the Receiving Office. After submission, an International Search Report is established by the International Search Authority, and the PCT application is published with the ISR.

If the applicant makes a request for an International Preliminary Examination, the International Preliminary Examining Authority will issue an International Preliminary Examination Report.

After that, the PCT international application enters the national phase.

An examiner in each country can refer to the ISR or IPER before conducting the patent examination.



[illegible][illegible]