

Examination Procedure

Japan Patent Office

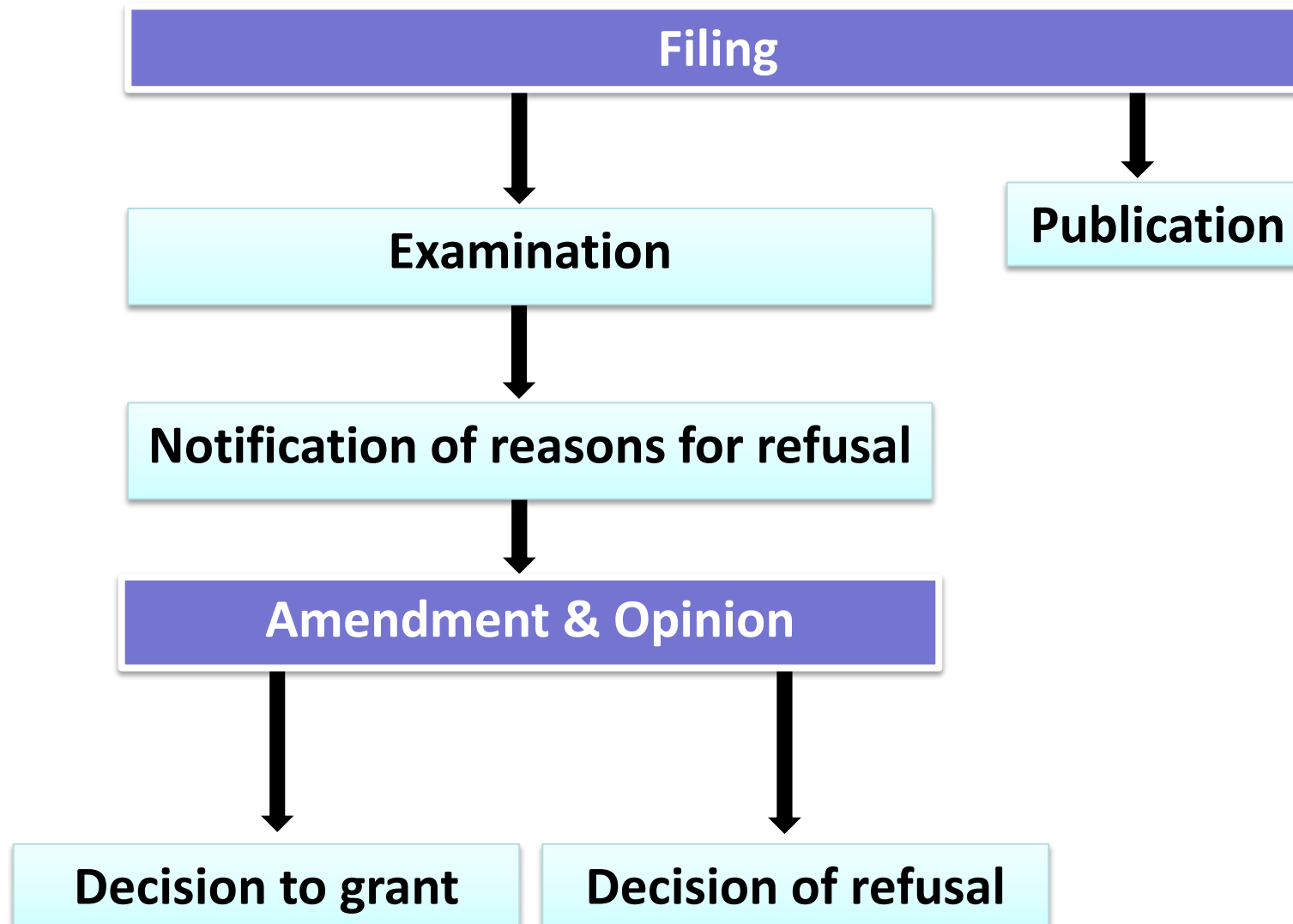
- I. Overview
- II. First Action (FA)
- III. Second Action (SA)

I. Overview

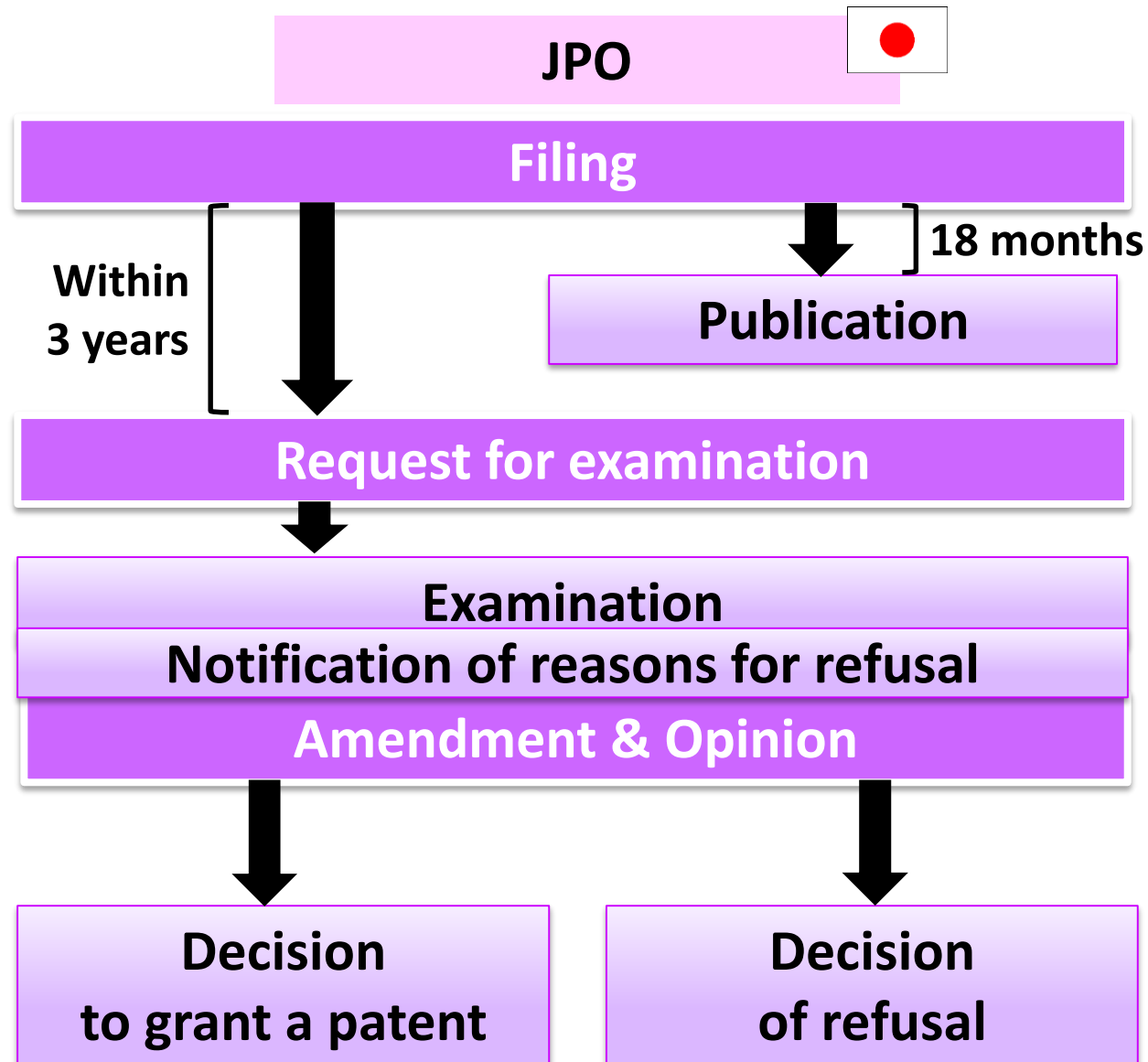
II. First Action (FA)

III. Second Action (SA)

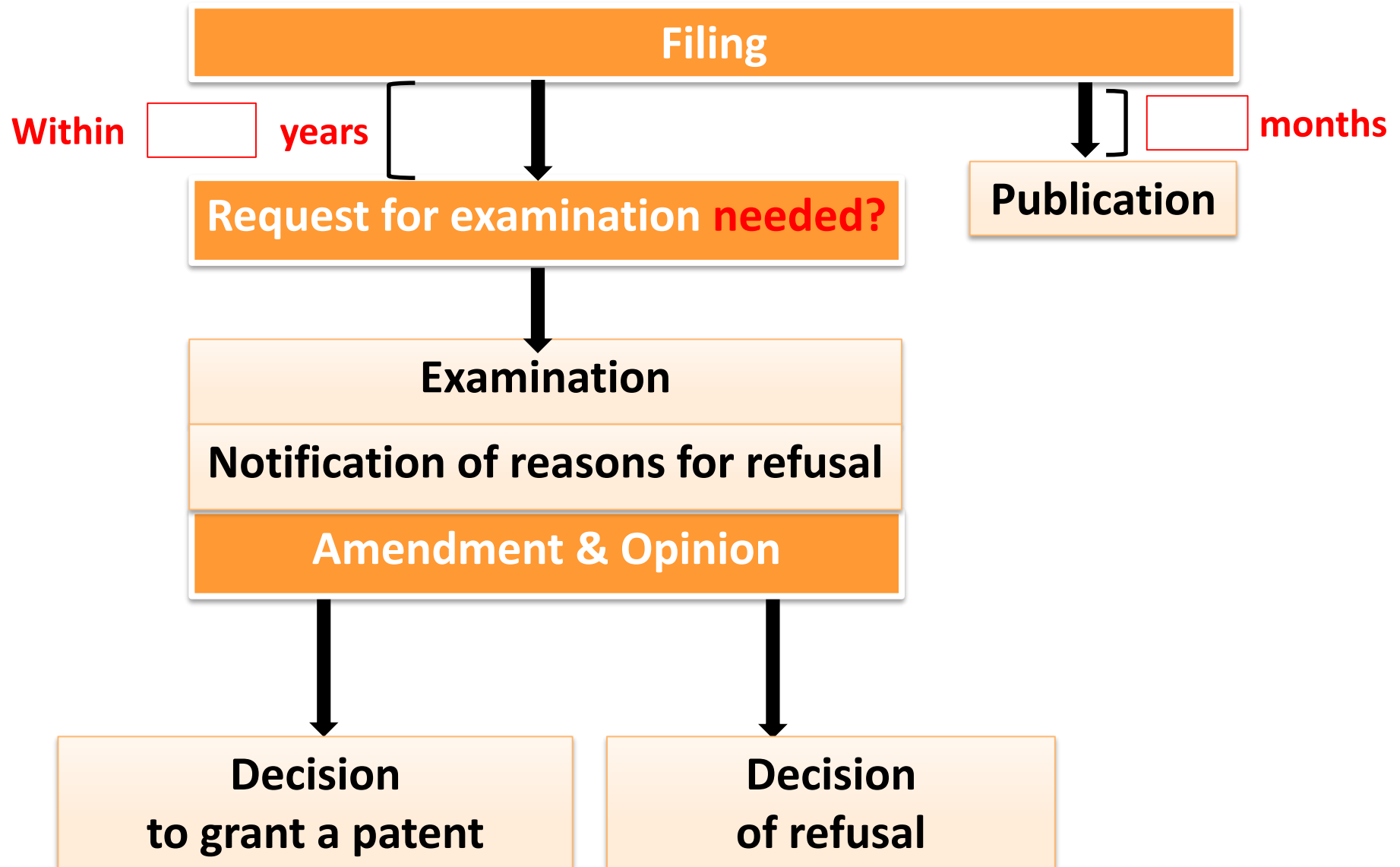
A. General Flow of Patent Examination



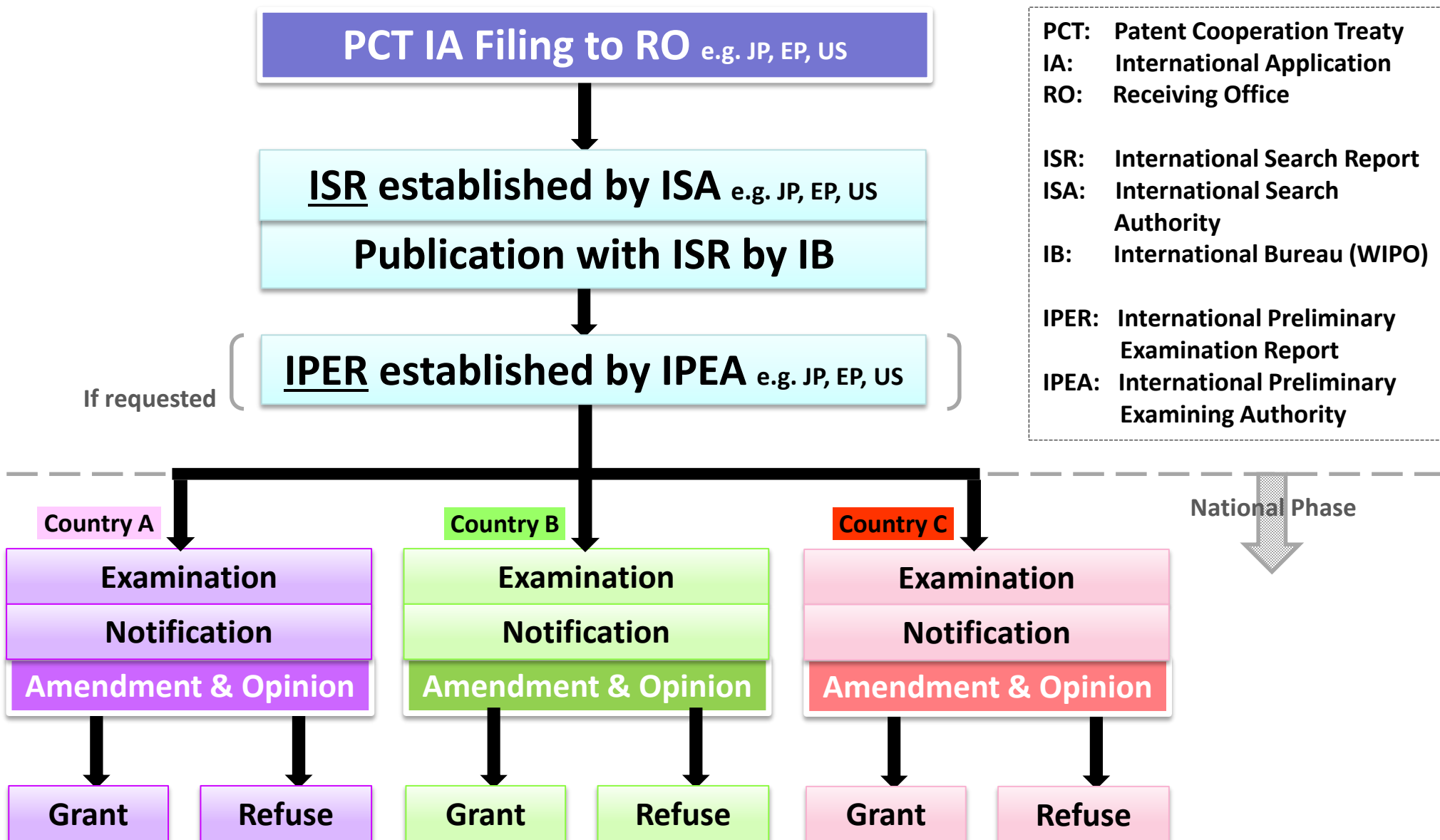
B. Flow of Patent Examination (JP)



C. How about your country?



D. Flow of Examination of PCT Application



E. Sample PCT Publication with ISR

(12) INTERNATIONAL APPLICATION PUBLISHED UNDER THE PATENT COOPERATION TREATY (PCT)
 (19) World Intellectual Property Organization
 International Bureau

(43) International Publication Date
 7 February 2013 (07.02.2013)

WIPO PCT

(10) International Publication Number
WO 2013/019268 A1

(51) International Patent Classification:
A47F 5/01 (2006.01)

(21) International Application Number:
PCT/US2012/000001

(22) International Filing Date:
 3 January 2012 (03.01.2012)

(25) Filing Language: English

(26) Publication Language: English

(30) Priority Data:
 61/462,760 2 August 2011 (02.08.2011) US
 13/136,657 8 August 2011 (08.08.2011) US

(71) Applicant: IP HOLDINGS, LLC [US/US]; 5408 NE 88th St. #A-101, Vancouver, WA 98665 (US).

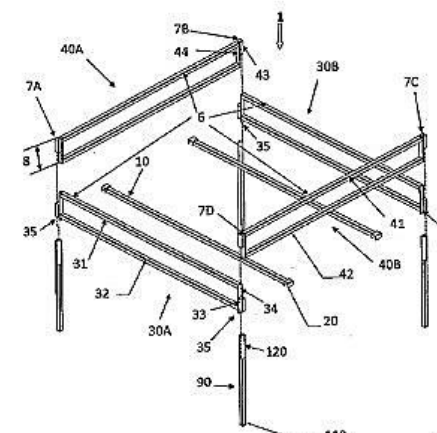
(72) Inventor: ORTEGA, Steve; 3262 Lookout Point Loop, Discovery Bay, CA 94505 (US).

(74) Agent: IRELAND, Robert; PO Box 273, Banks, OR 97106 (US).

(81) Designated States (unless otherwise indicated, for every kind of national protection available): AE, AG, AL, AM, AO, AT, AU, AZ, BA, BB, BG, BH, BR, BW, BY, BZ, CA, CH, CL, CN, CO, CR, CU, CZ, DE, DK, DM, DO, DZ, EC, EE, EG, ES, FI, GB, GD, GE, GH, GM, GT, HN, HR, HU, ID, IL, IN, IS, JP, KE, KG, KM, KN, KP, KR, KZ, LA, LC, LK, LR, LS, LT, LU, LY, MA, MD, ME, MG, MK, MN, MW, MX, MY, MZ, NA, NG, NI, NO, NZ, OM, PG, PH, PL, PT, QA, RO, RS, RU, RW, SC, SD, SE, SG, SK, SL, SM, ST, SV, SY, TH, TJ, TM, TN, TR, TT, TZ, UA, UG, US, UZ, VC, VN, ZA, ZM, ZW.

(84) Designated States (unless otherwise indicated, for every kind of regional protection available): ARIPO (BW, GH, GM, KE, LR, LS, MW, MZ, NA, RW, SD, SL, SZ, TZ, UG, ZM, ZW), Eurasian (AM, AZ, BY, KG, KZ, MD, RU, TJ, TM), European (AL, AT, BE, BG, CH, CY, CZ, DE, DK, EE, ES, FI, FR, GB, GR, HU, IE, IS, IT, LT, LU, LV, MC, MK, MT, NL, NO, PL, PT, RO, RS, SE, SI, SK, SM, TR), OAPI (BF, BJ, CF, CG, CI, CM, GA, GN, GQ, GW, ML, MR, NE, SN, TD, TG).

(54) Title: TRAY STAND



(57) Abstract: A modular portable stand that can be quickly and easily assembled and disassembled by a solo user without the need for any tools or hardware in a very short time. In its disassembled condition, the stand includes a first and second base frame, a first and second side frame, and four legs, for a total component count of eight, with only three unique components, the base frame, side frame, and leg. The modularity of components provides simplified manufacturing, while allowing for relatively small disassembled packaging for transport, shipping or storage. The interlocking of the components at each corner provides a stiff and sturdy perimeter frame when assembled, that becomes more rigid as loaded with plant propagation trays, fish tanks, or other heavy items than require level secure support.

[Continued on next page]

INTERNATIONAL SEARCH REPORT

International application No.
 PCT/US 12/00001

A. CLASSIFICATION OF SUBJECT MATTER
 IPC(8) - A47F 5/01 (2012.01)
 USPC - 211/133.2
 According to International Patent Classification (IPC) or to both national classification and IPC

B. FIELDS SEARCHED
 Minimum documentation searched (classification system followed by classification symbols)
 IPC(8) - A47F 5/01 (2012.01)
 USPC - 211/133.2

Documentation searched other than minimum documentation to the extent that such documents are included in the fields searched
 IPC(8) - A47F 5/00, A47F 5/01, A47G 29/00 (2012.01)
 USPC - 211/126.1, 133.1, 133.2, 189, 195; 248/127, 146, 150, 183.1

Electronic data base consulted during the international search (name of data base and, where practicable, search terms used)
 PubWEST (PGPB, USPT, EPAB, JPAB); Google (Patents, Scholar, Web)
 Search Terms: Stand, tray, table, stool, bed, modular, collapse, assemble, frame, base, side, flank, second, two, fourth, four, multiple, plural, many, leg, interlock, lock, couple, connect, engage, without, not, tool, hardware, screw, hammer, wrench, pliers, dowel, thin.

C. DOCUMENTS CONSIDERED TO BE RELEVANT

Category*	Citation of document, with indication, where appropriate, of the relevant passages	Relevant to claim No.
X =====	US 5,943,968 A (DOBSON et al.) 31 August 1999 (31.08.1999) Fig. 1-2, 6-9; col 4, ln 19-39, col 5, ln 18-35, col 5, ln 51-67	1 =====
Y	US 2008/0191538 A1 (BERG et al.) 14 August 2008 (14.08.2008) Fig. 1-2, 4, 10; Para [0039], [0041], [0051], [0059]	2-3
Y	US 2010/0313474 A1 (WILLIAMS) 16 December 2010 (16.12.2010) Fig. 1-2, 4; Para [0029]-[0031], [0034]	3

☐ Further documents are listed in the continuation of Box C. ☐

* Special categories of cited documents:

"A" document defining the general state of the art which is not considered to be of particular relevance	"T" later document published after the international filing date or priority date and not in conflict with the application but cited to understand the principle or theory underlying the invention
"E" earlier application or patent but published on or after the international filing date	"X" document of particular relevance; the claimed invention cannot be considered novel or cannot be considered to involve an inventive step when the document is taken alone
"L" document which may throw doubts on priority claim(s) or which is cited to establish the publication date of another citation or other special reason (as specified)	"Y" document of particular relevance; the claimed invention cannot be considered to involve an inventive step when the document is combined with one or more other such documents, such combination being obvious to a person skilled in the art
"O" document referring to an oral disclosure, use, exhibition or other means	"&" document member of the same patent family
"P" document published prior to the international filing date but later than the priority date claimed	