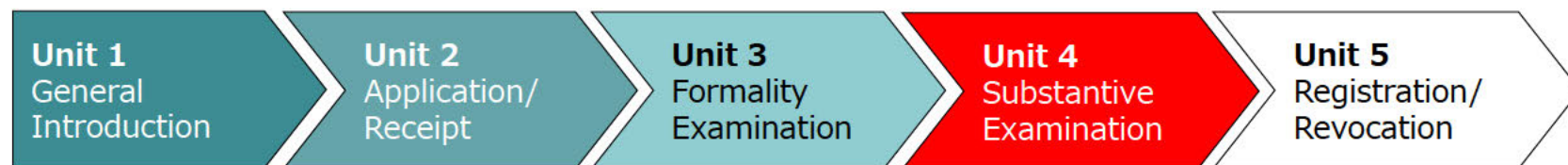


IP Office's Business Process

Substantive Examination



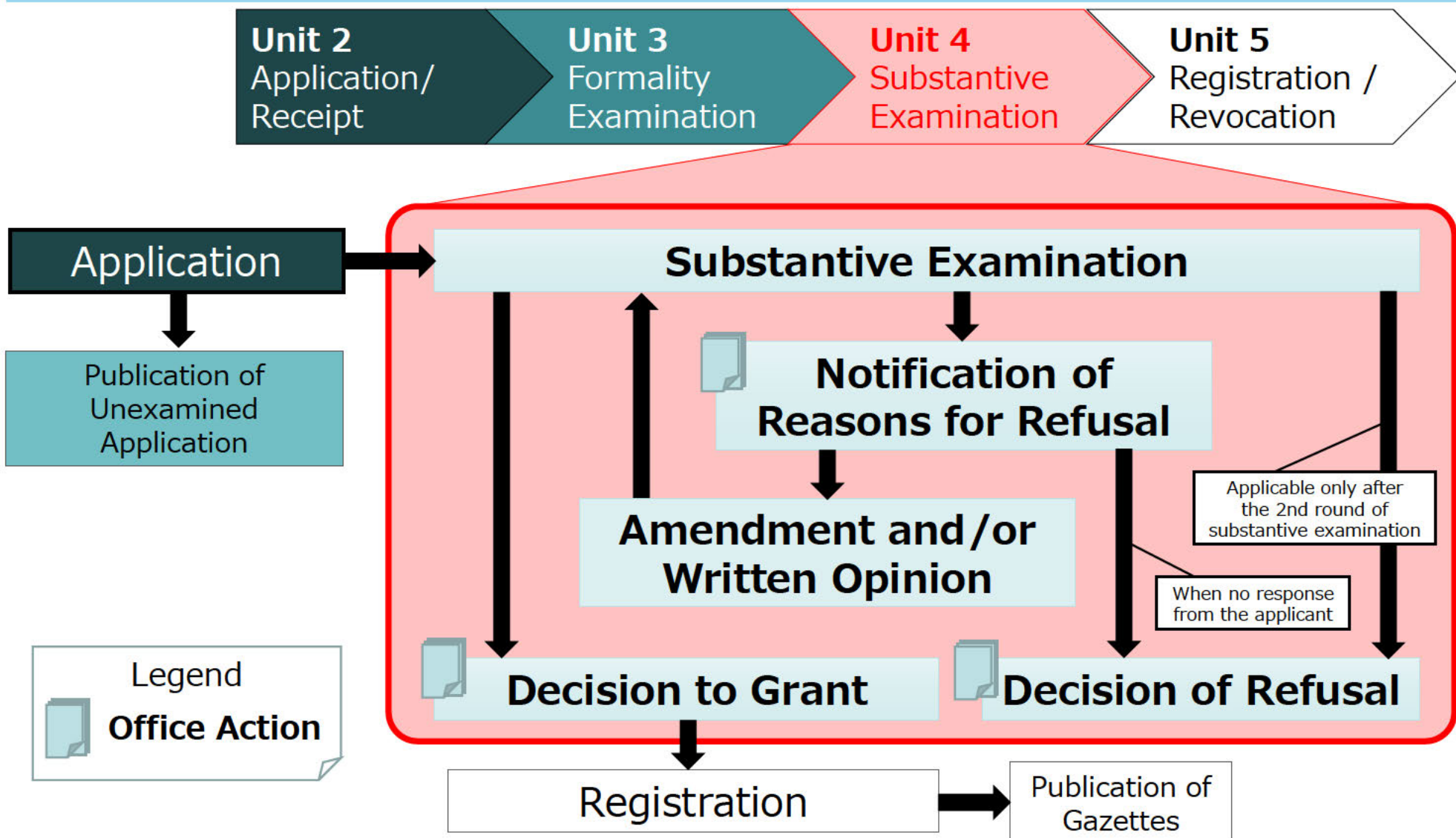
Japan Patent Office

Table of Contents

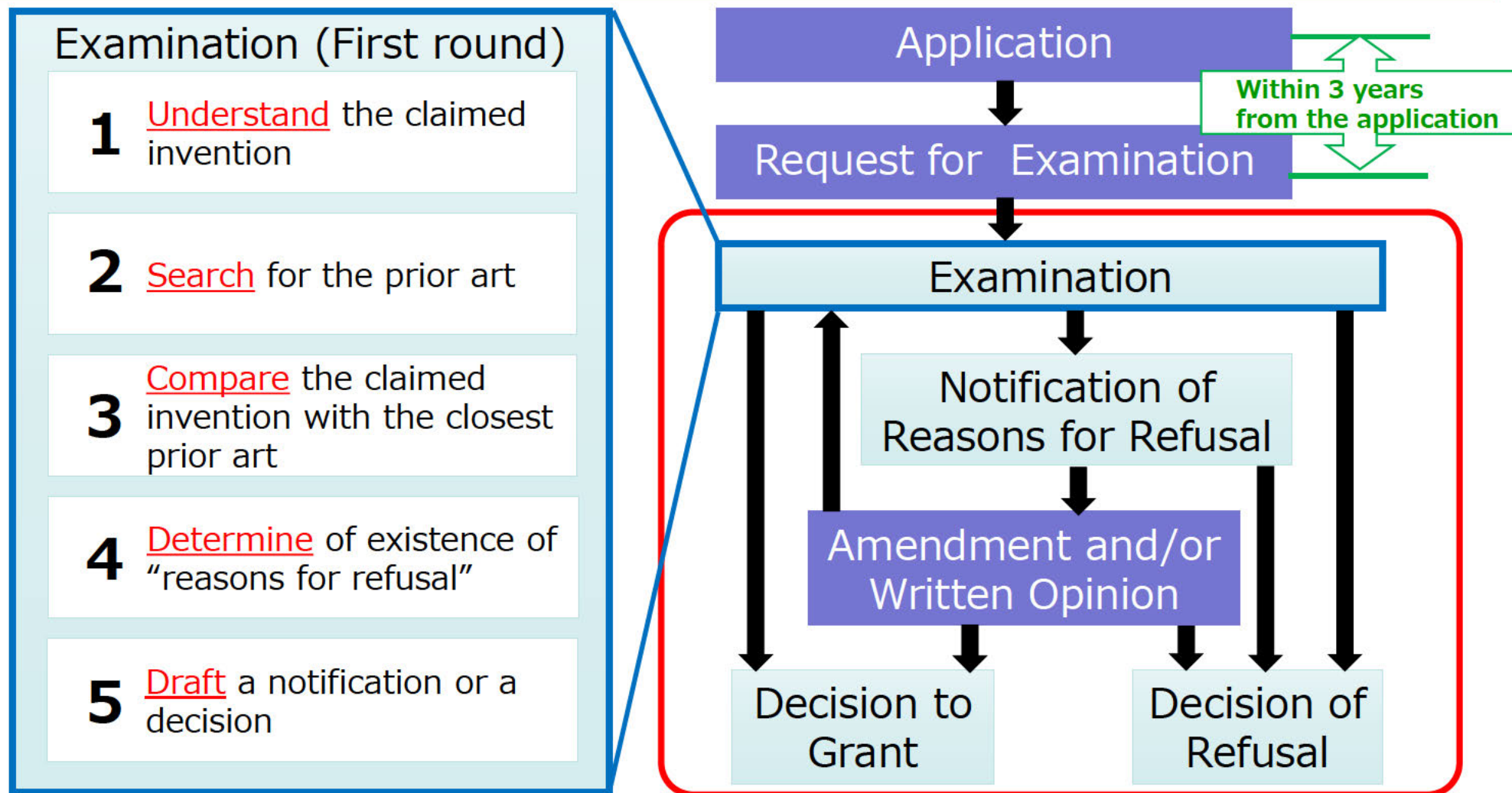
- Overview of Substantive Examination
- Management of Substantive Examination at JPO
 - Manpower/Training
 - IT Support
 - Outsourcing
 - Quality Management System

Substantive Examination

- Overview Flowchart of Substantive Examination



- Patent Examination in JPO (as an example of a concrete flow)



“Reasons for refusal”: Incompliance with the requirements of unity of invention, the requirements of description and claims, or the requirements for amendments; lack of novelty or inventive step; etc.