

1. Quality Management System (QMS)

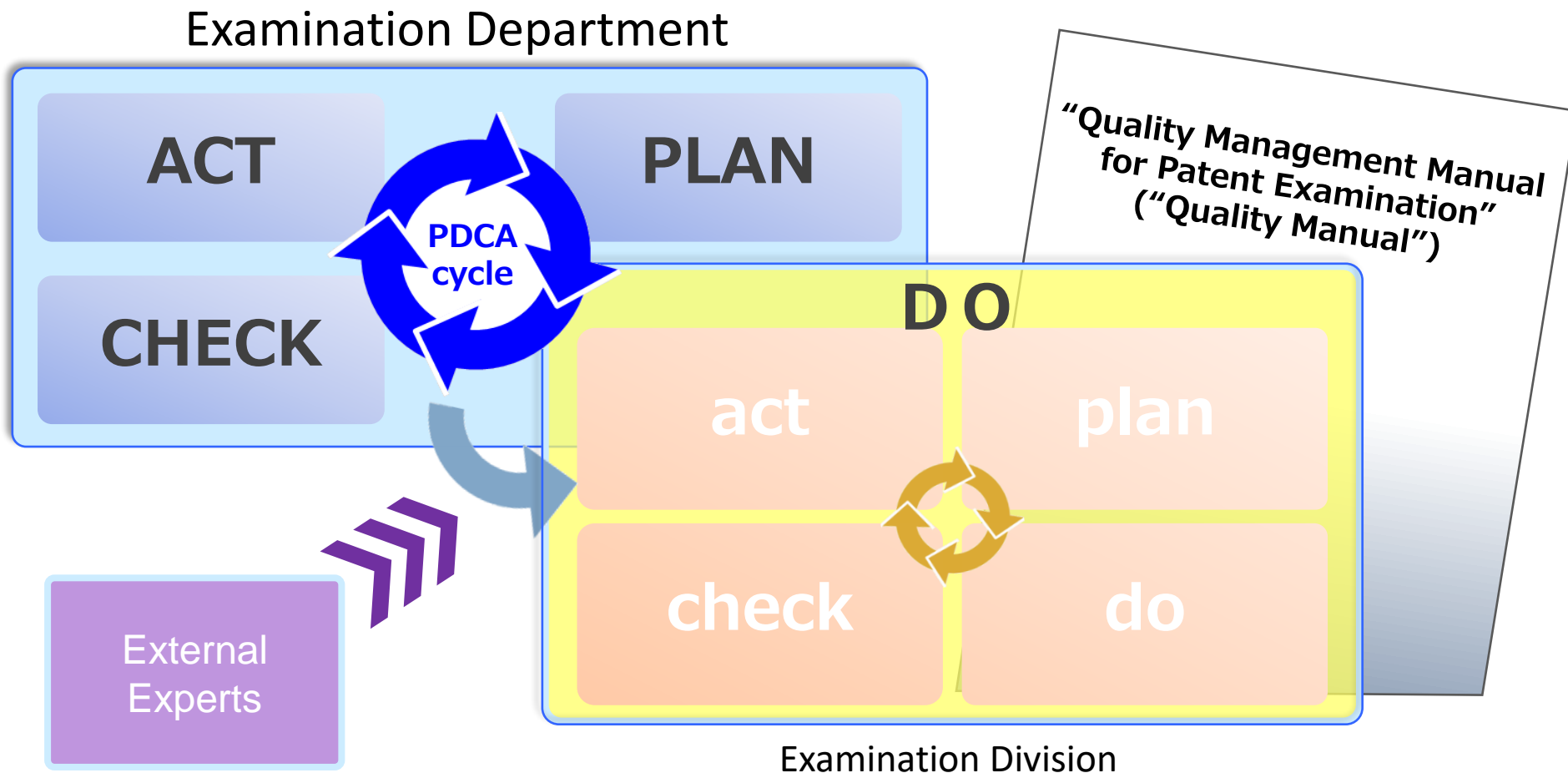
1. i. Quality Policy on Patent Examination

- *We grant robust, broad and valuable patents.*
- *We meet wide-ranging needs and expectations.*
- *We all dedicate ourselves to improving quality, cooperating with concerned persons and parties.*
- *We contribute to improving the quality of patent examination globally.*
- *We continually improve operations.*
- *We raise the knowledge and capabilities of our staff.*



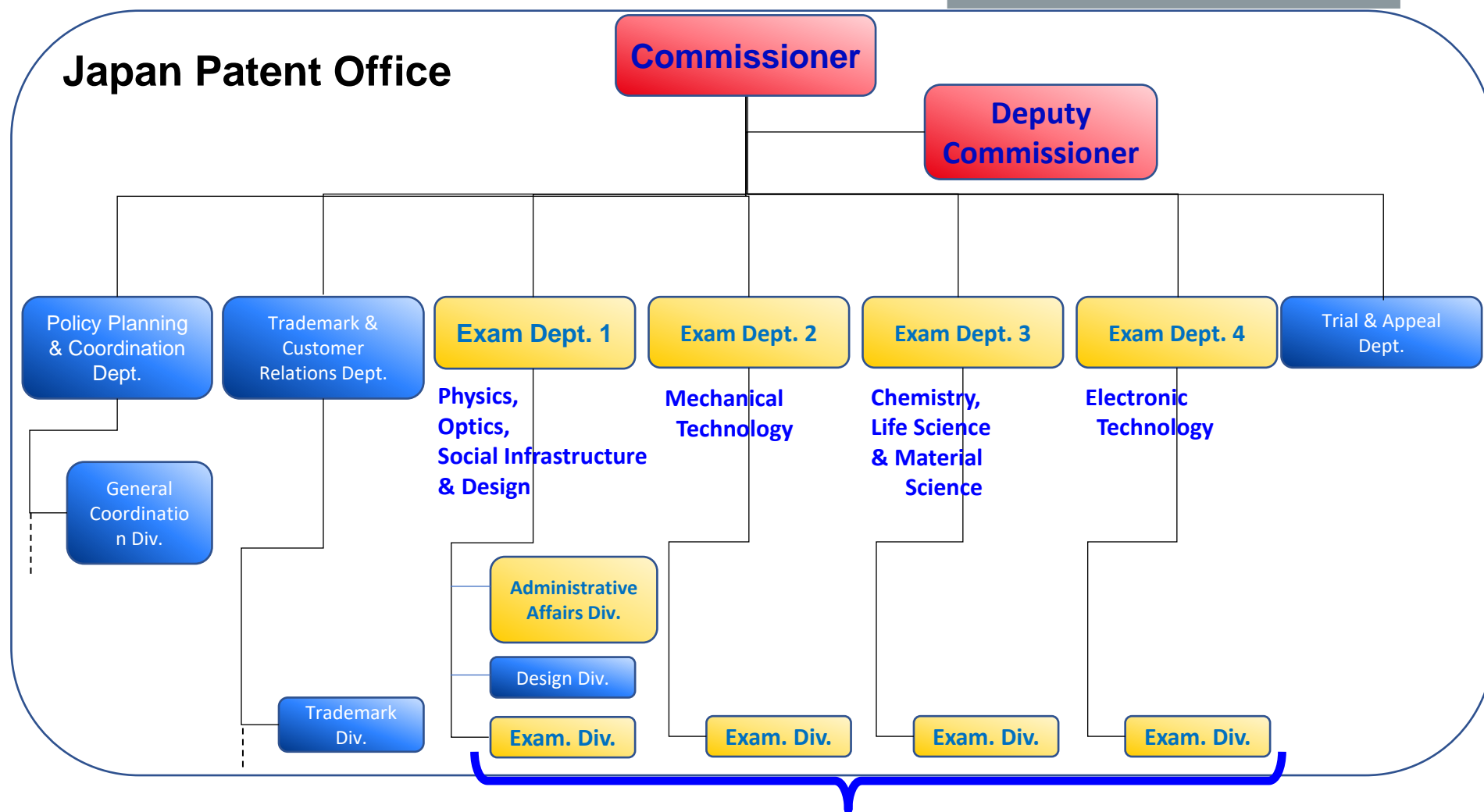
<https://www.jpo.go.jp/e/introduction/hinshitu/shinsa/document/policies/pamphlet.pdf>

1.ii. Quality Manual / PDCA Cycle in QMS



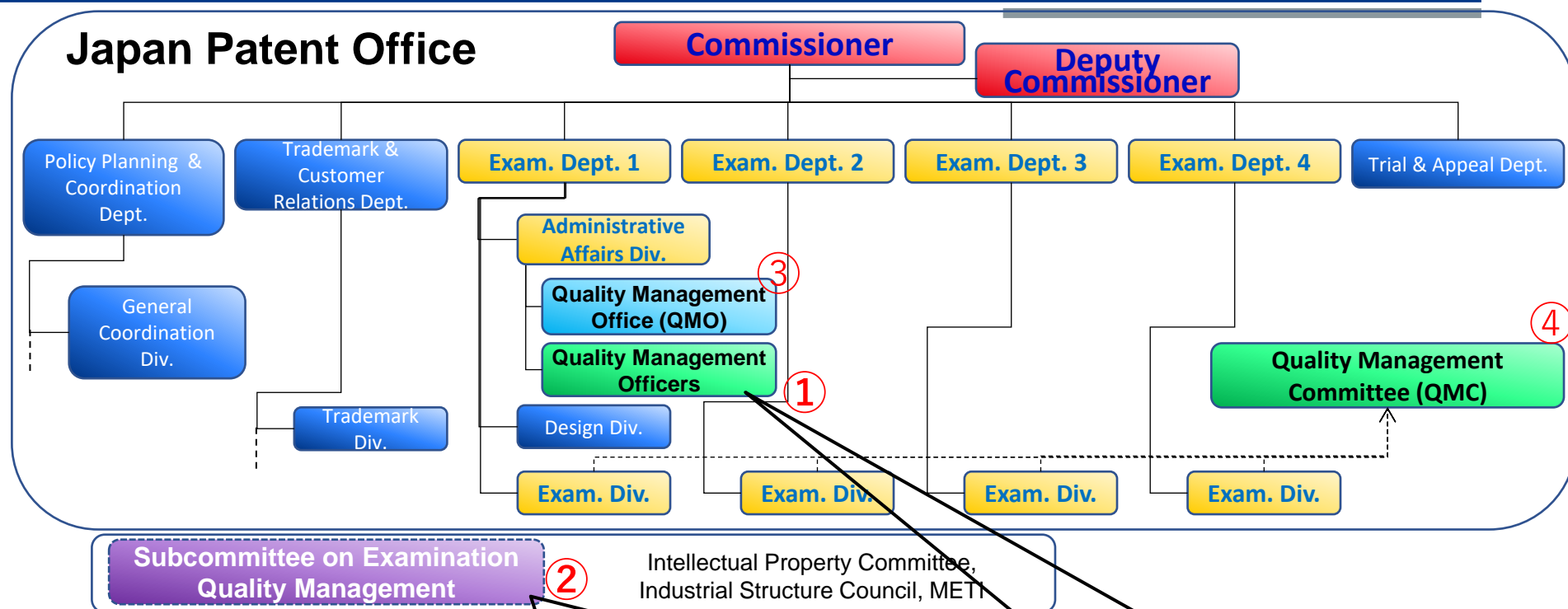
https://www.jpo.go.jp/e/introduction/hinshitu/shinsa/tokkyo/document/tokkyo_manual/manual.pdf

1.iii. Organizational Chart of JPO



- 38 Examination Divisions
- Around 130 Directors

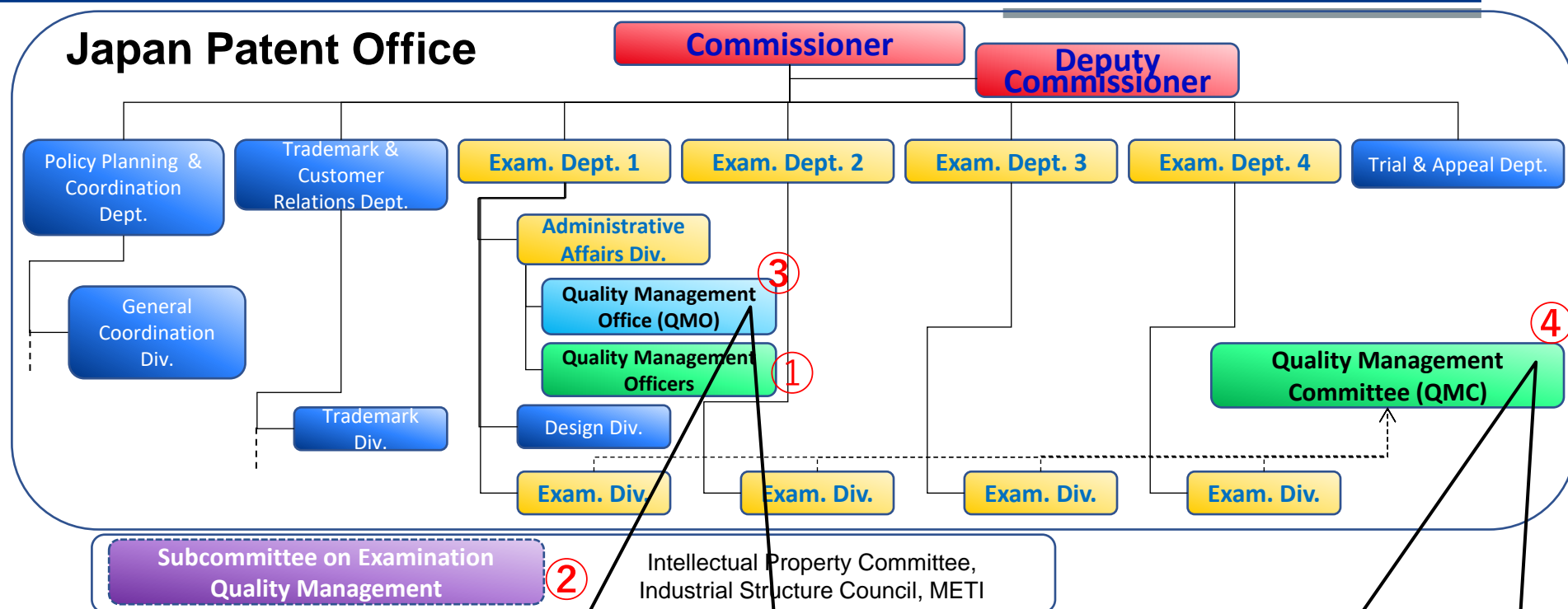
1.iv. Organization of Quality Management (1)



The JPO receives evaluations on the status of its quality management system from the Subcommittee's 8 external experts.

Around 100 Quality Management Officers for quality audit

1.iv. Organization of Quality Management (2)



5 Examiners & 40 Researchers

- supporting initiatives
- obtaining facts on examination processes
- planning necessary initiatives

1 Chairperson & 12 Members

- analyzing & evaluating data
- reporting the results
- feedback to examiners

1.v. Workflow of Patent Examinations and Quality Management System

