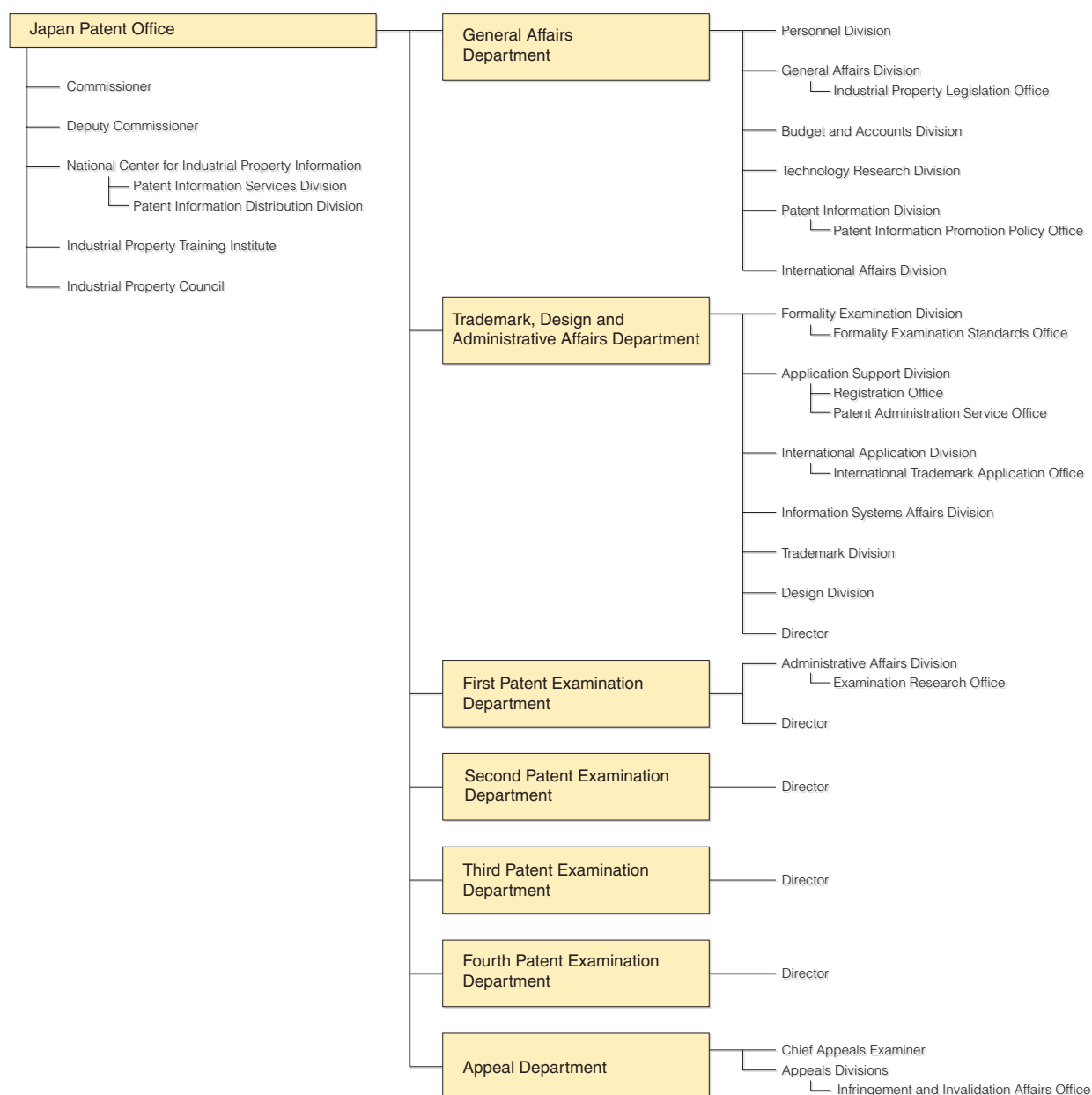


Organization of the JPO (as of January, 2002)



Regular Staffs at the JPO

F Y	1998	1999	2000	2001	2002
Total number of staffs	2,531	2,534	2,524	2,469	2,470
Examiners and Appeal examiners	1,647	1,663	1,672	1,686	1,699
Examiners	1,264	1,274	1,281	1,293	1,304
Patent/Utility model examiners	1,078	1,083	1,088	1,096	1,105
Design examiners	49	51	51	51	51
Trademark examiners	137	140	142	146	148
Appeal examiners	383	389	391	393	395
Clerical staff	884	871	852	783	771