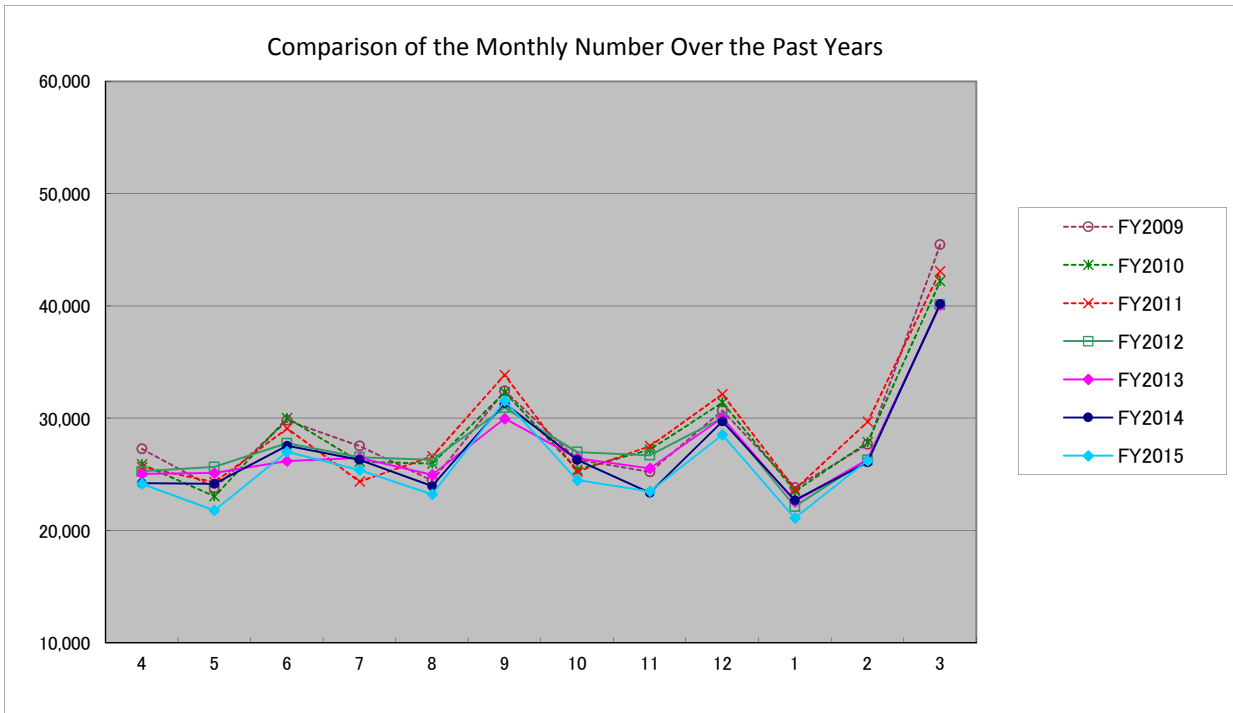
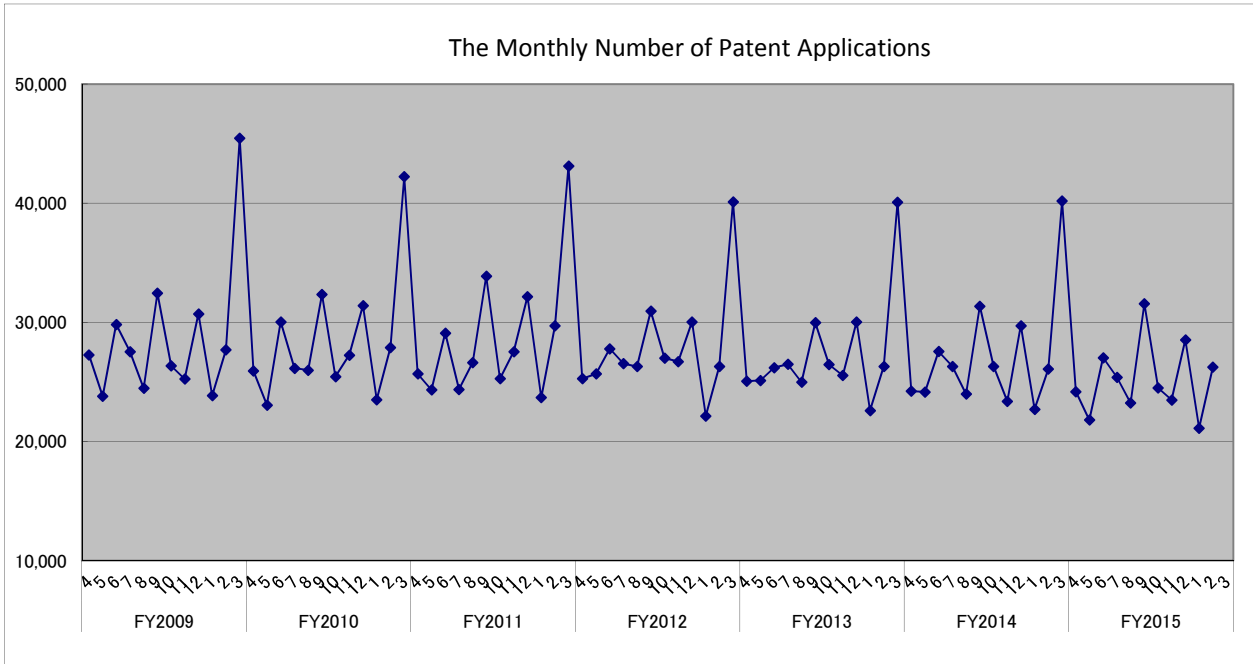


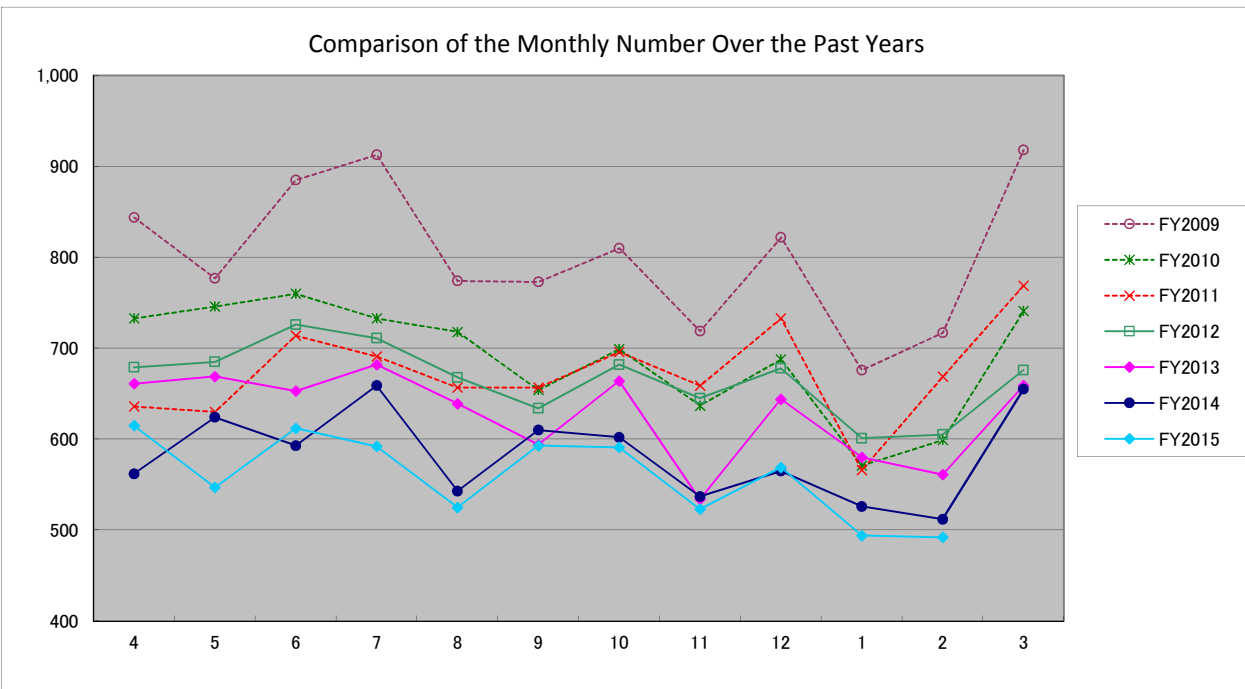
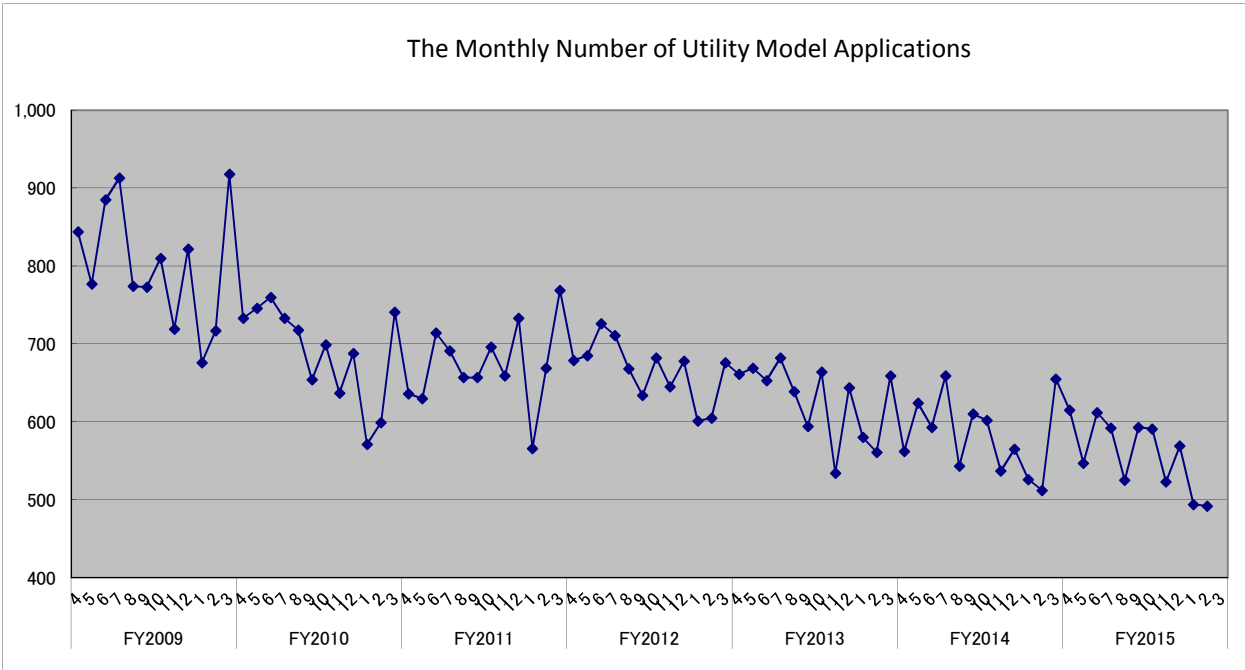
The Number of Patent Applications

*The preliminary data are tentatively compiled figures based on the JPO Statistical Database.
Please be noted that the data may be subject to change through continual data collection and processing.



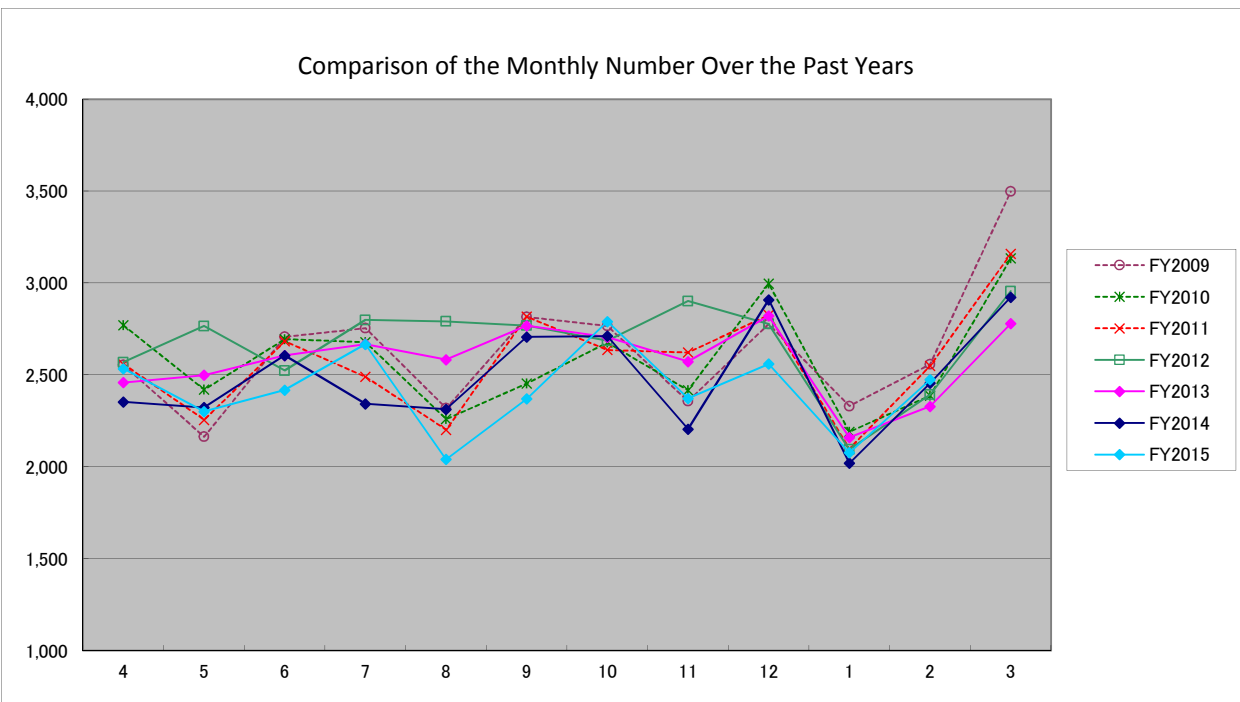
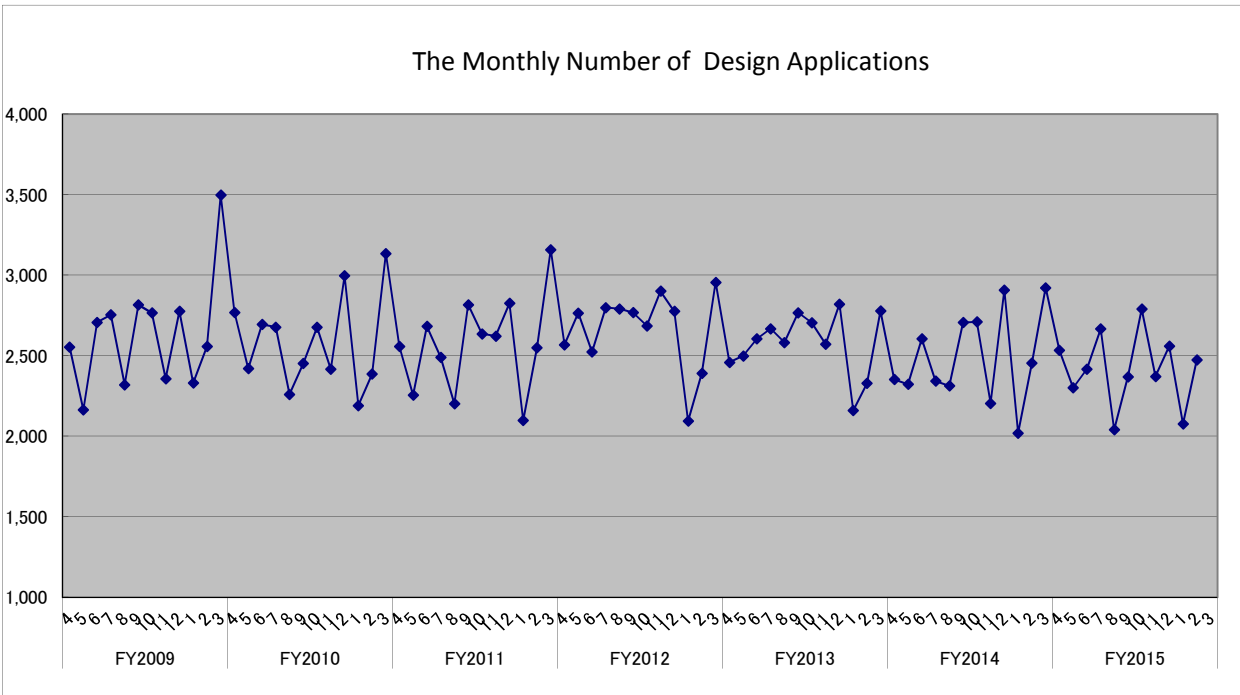
The Number of Utility Model Applications

*The preliminary data are tentatively compiled figures based on the JPO Statistical Database.
Please be noted that the data may be subject to change through continual data collection and processing.



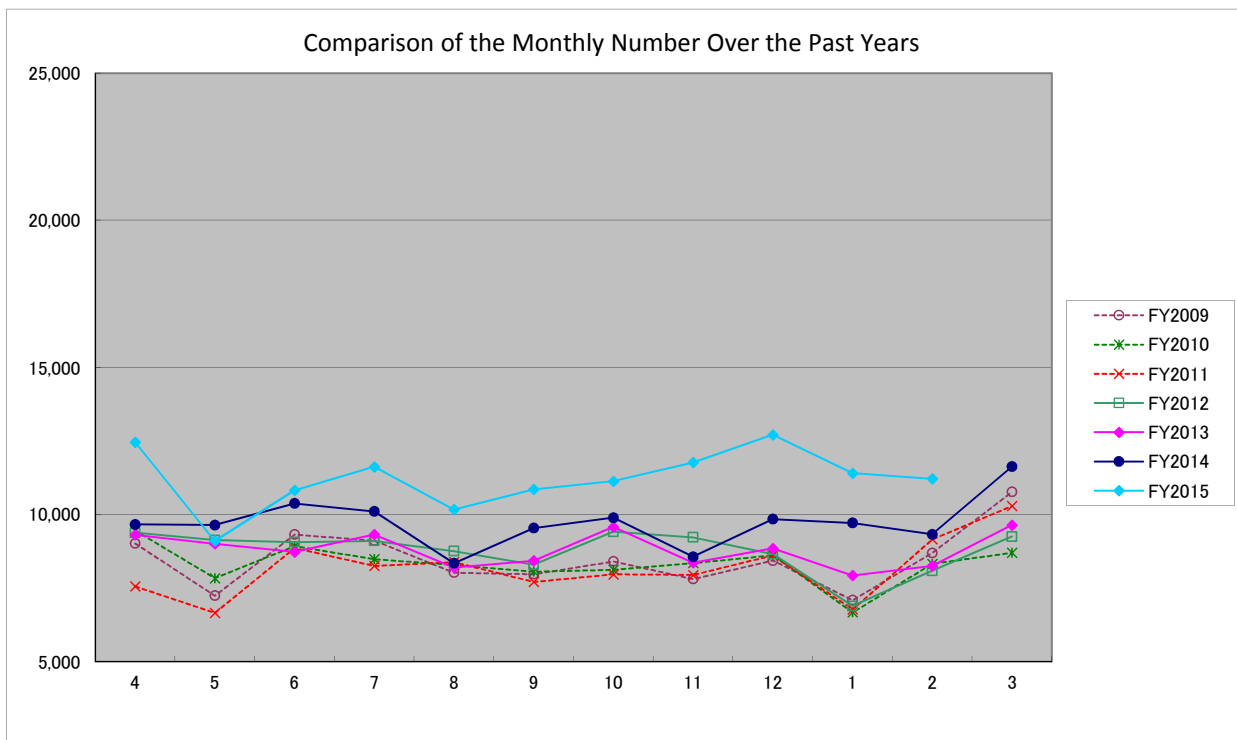
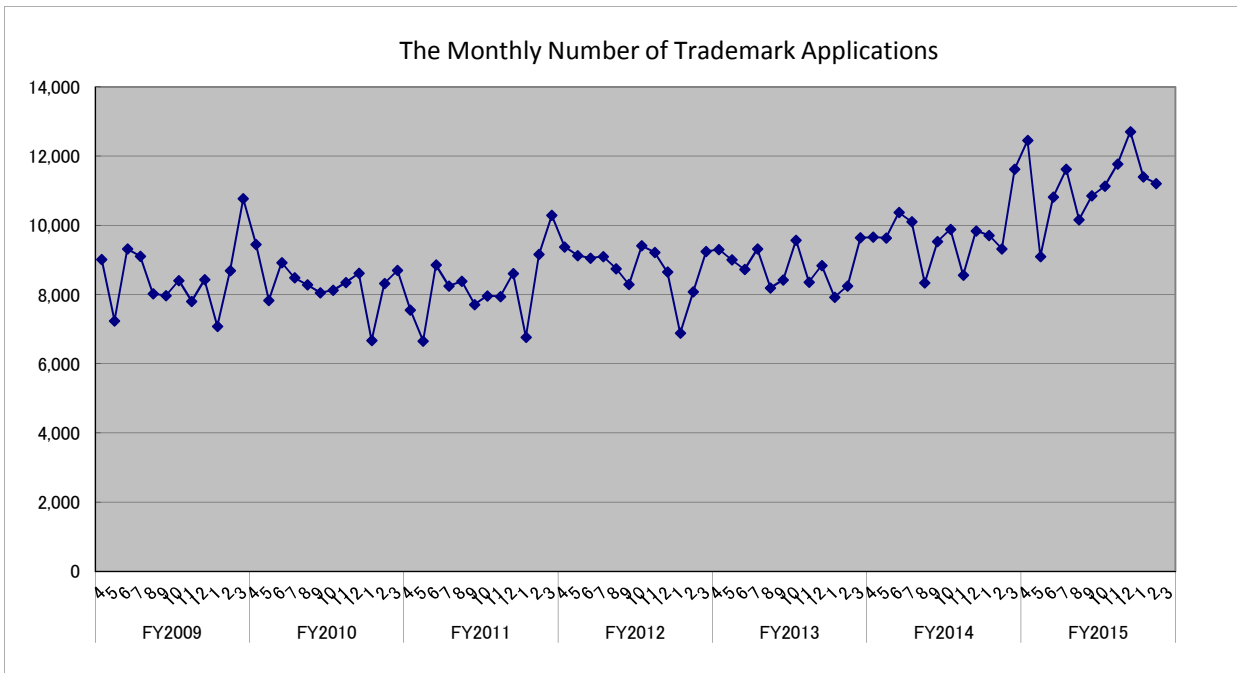
The Number of Design Applications

*The preliminary data are tentatively compiled figures based on the JPO Statistical Database.
Please be noted that the data may be subject to change through continual data collection and processing.



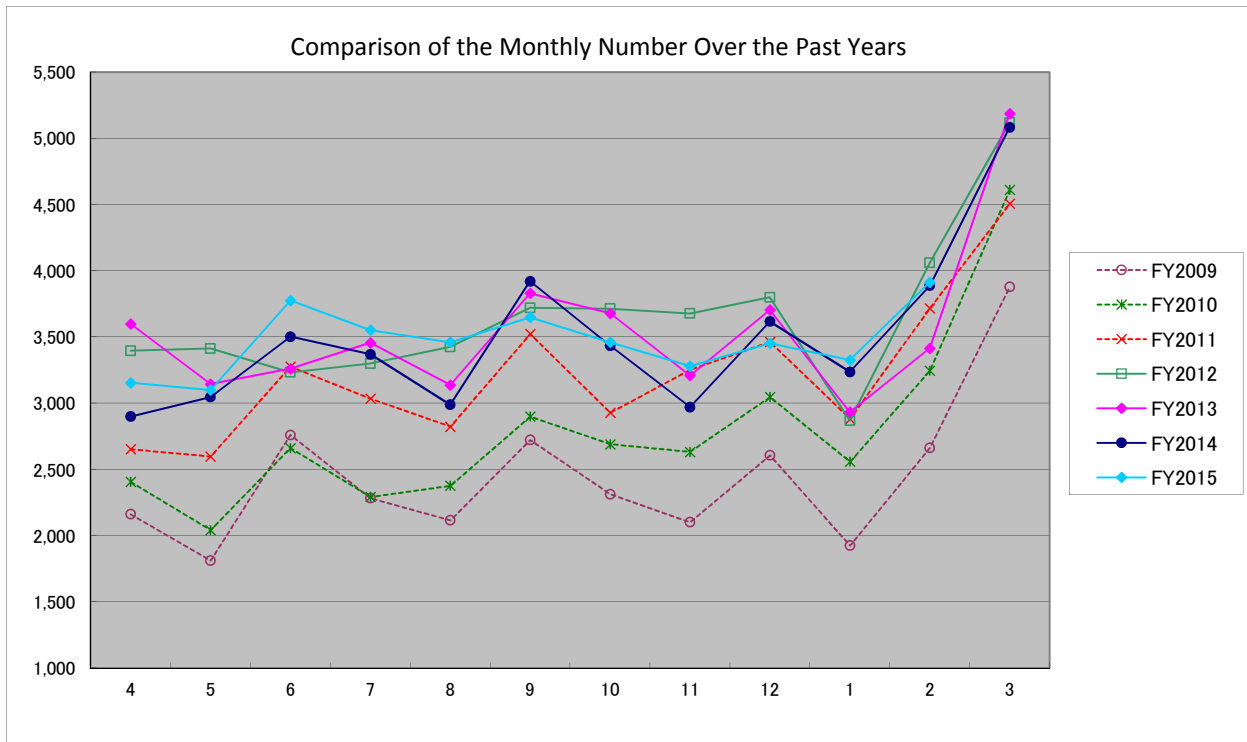
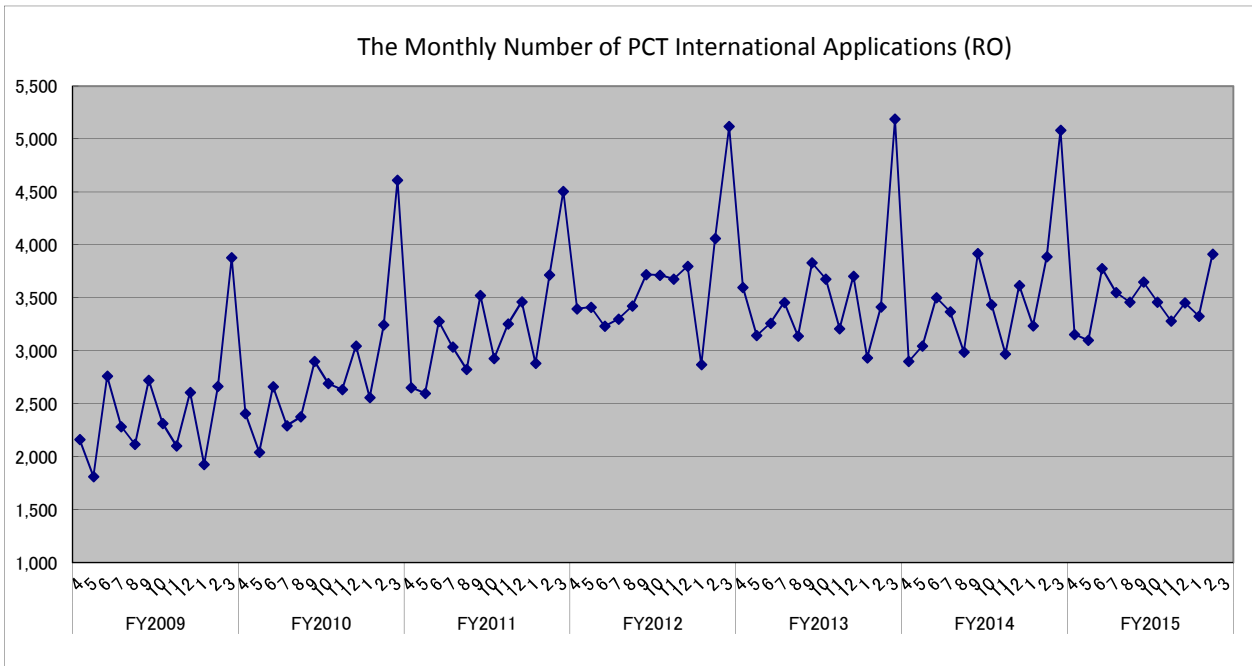
The Number of Trademark Applications

*The preliminary data are tentatively compiled figures based on the JPO Statistical Database.
Please be noted that the data may be subject to change through continual data collection and processing.



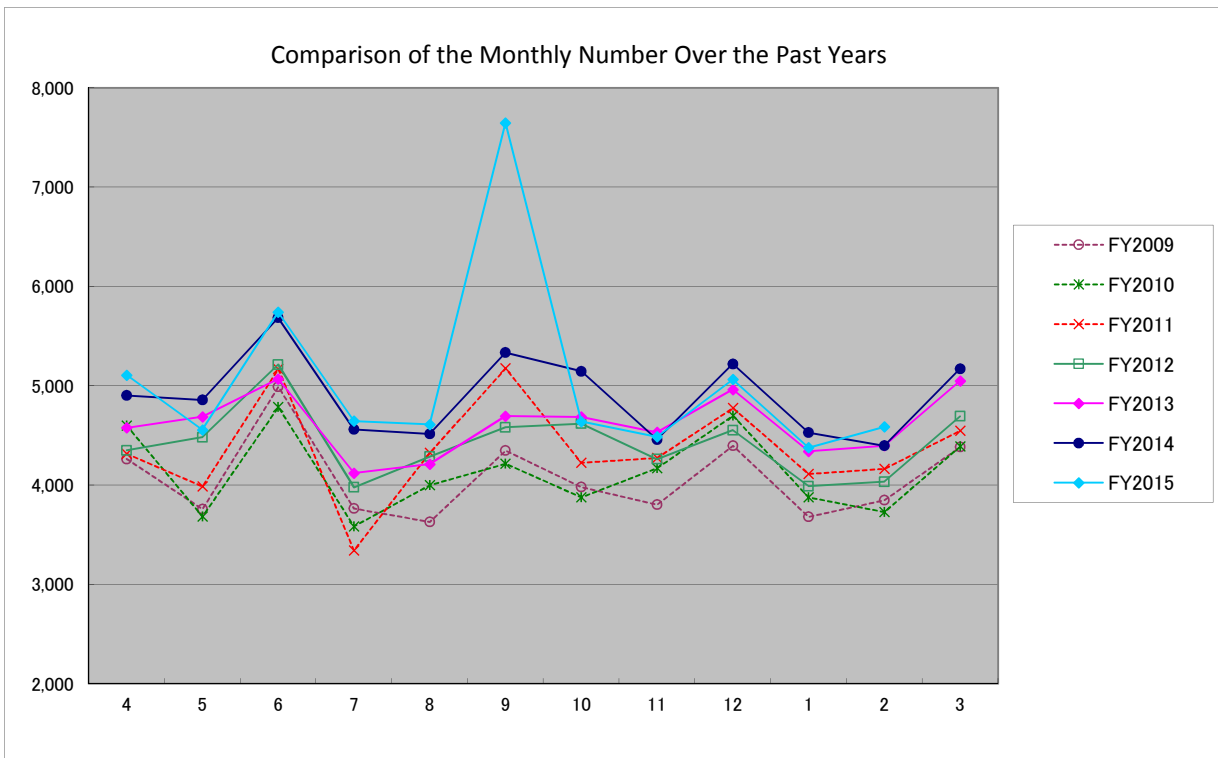
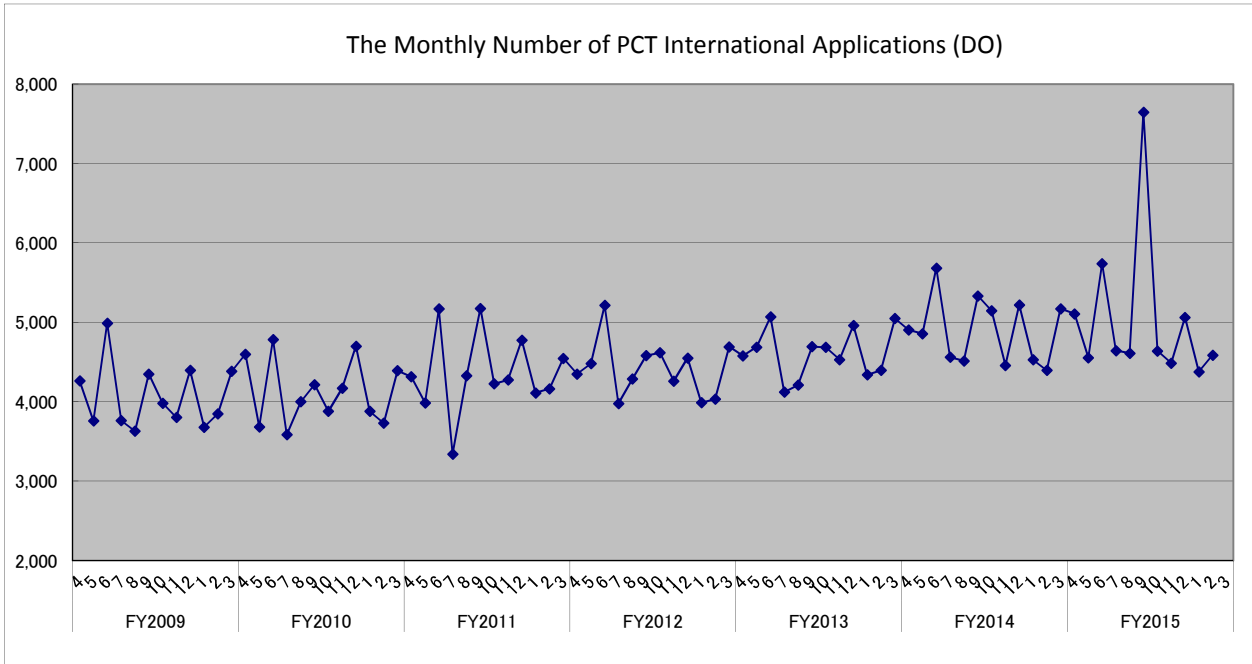
The Number of PCT International Applications (RO)

*The preliminary data are tentatively compiled figures based on the JPO Statistical Database.
Please be noted that the data may be subject to change through continual data collection and processing.



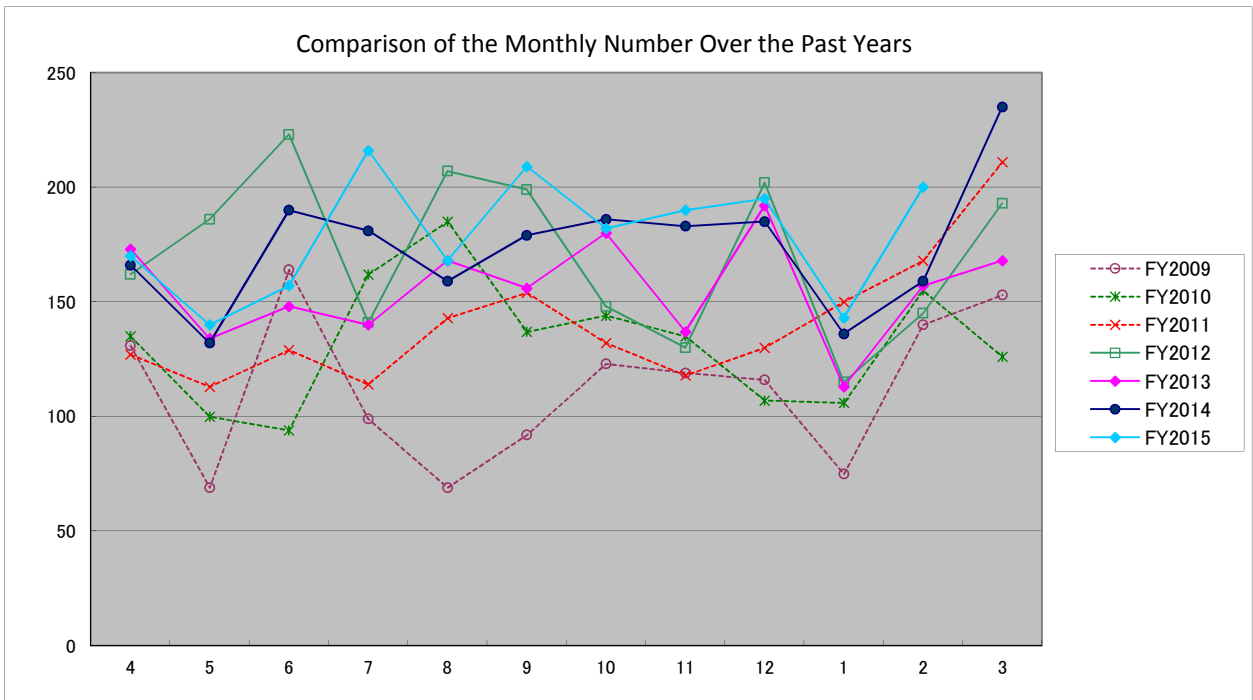
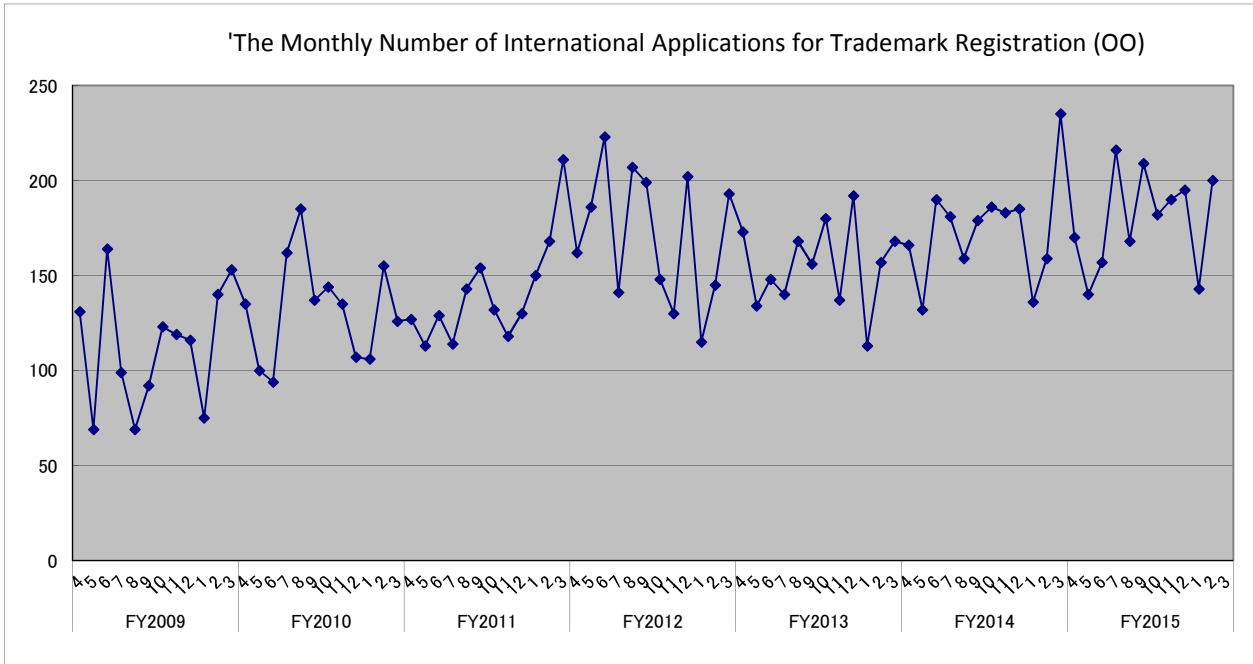
The Number of PCT International Applications (DO)

*The preliminary data are tentatively compiled figures based on the JPO Statistical Database.
Please be noted that the data may be subject to change through continual data collection and processing.



The Number of International Applications for Trademark Registration (OO)

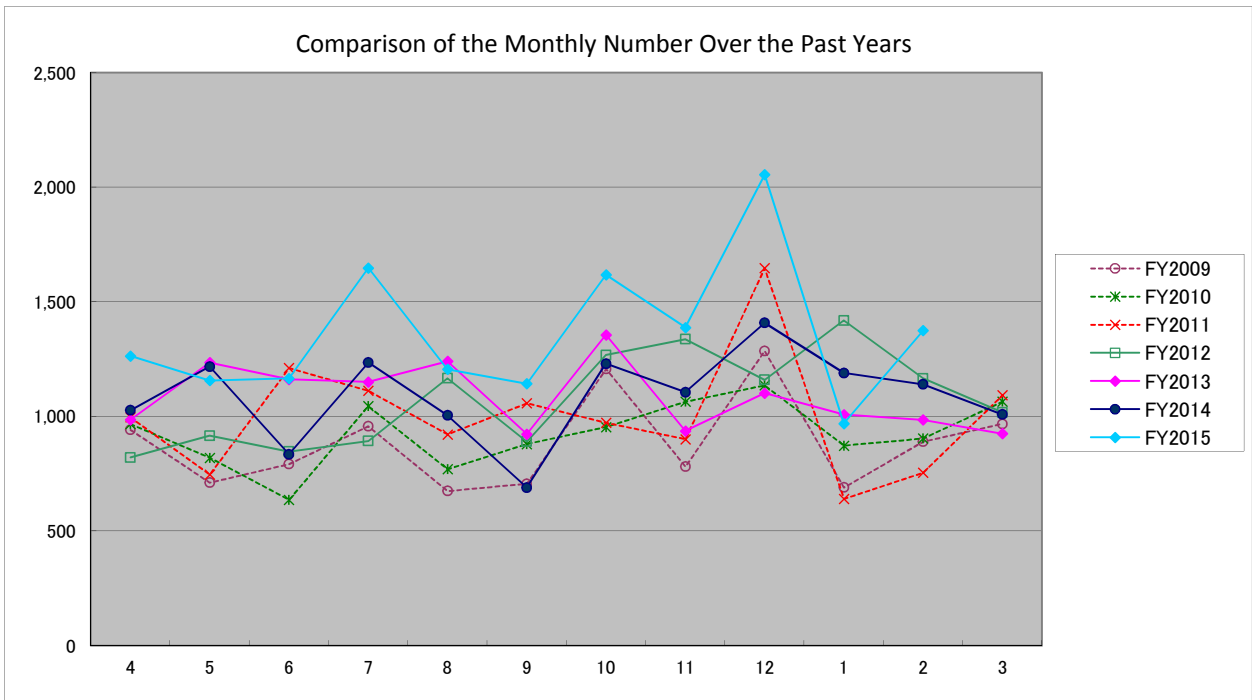
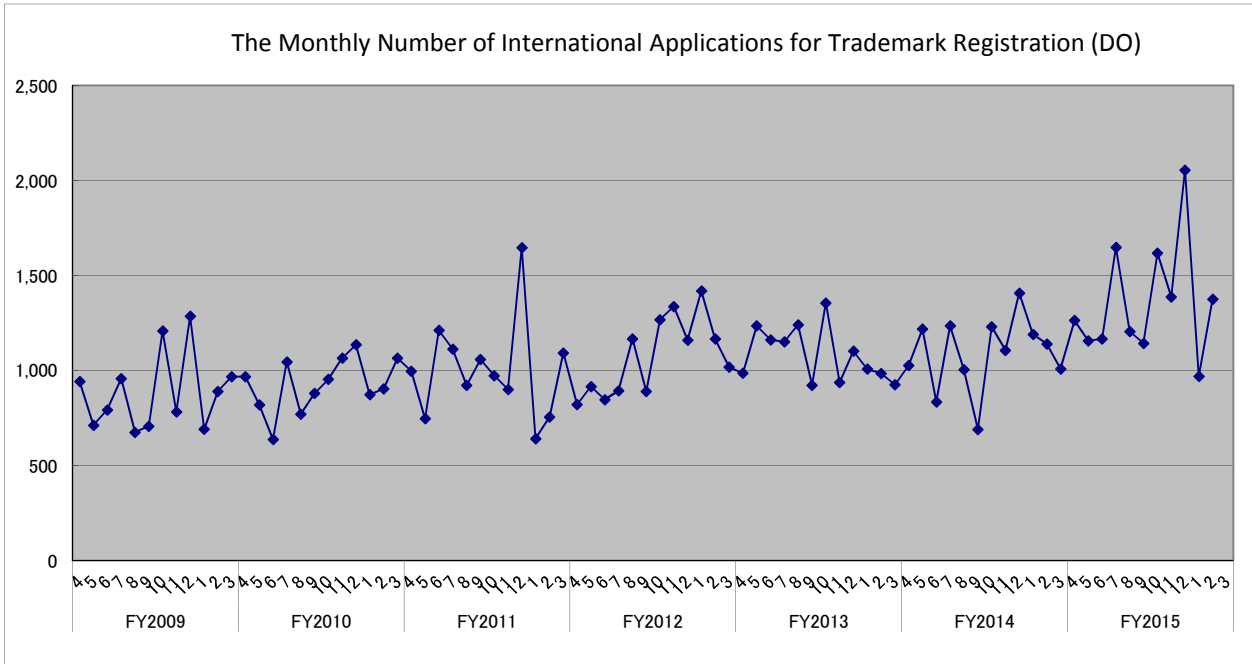
*The preliminary data are tentatively compiled figures based on the JPO Statistical Database.
Please be noted that the data may be subject to change through continual data collection and processing.



The Number of International Applications for Trademark Registration (DO)

*The preliminary data are tentatively compiled figures based on the JPO Statistical Database.

Please be noted that the data may be subject to change through continual data collection and processing.



The Number of Requests for Examination

*The preliminary data are tentatively compiled figures based on the JPO Statistical Database.
Please be noted that the data may be subject to change through continual data collection and processing.

