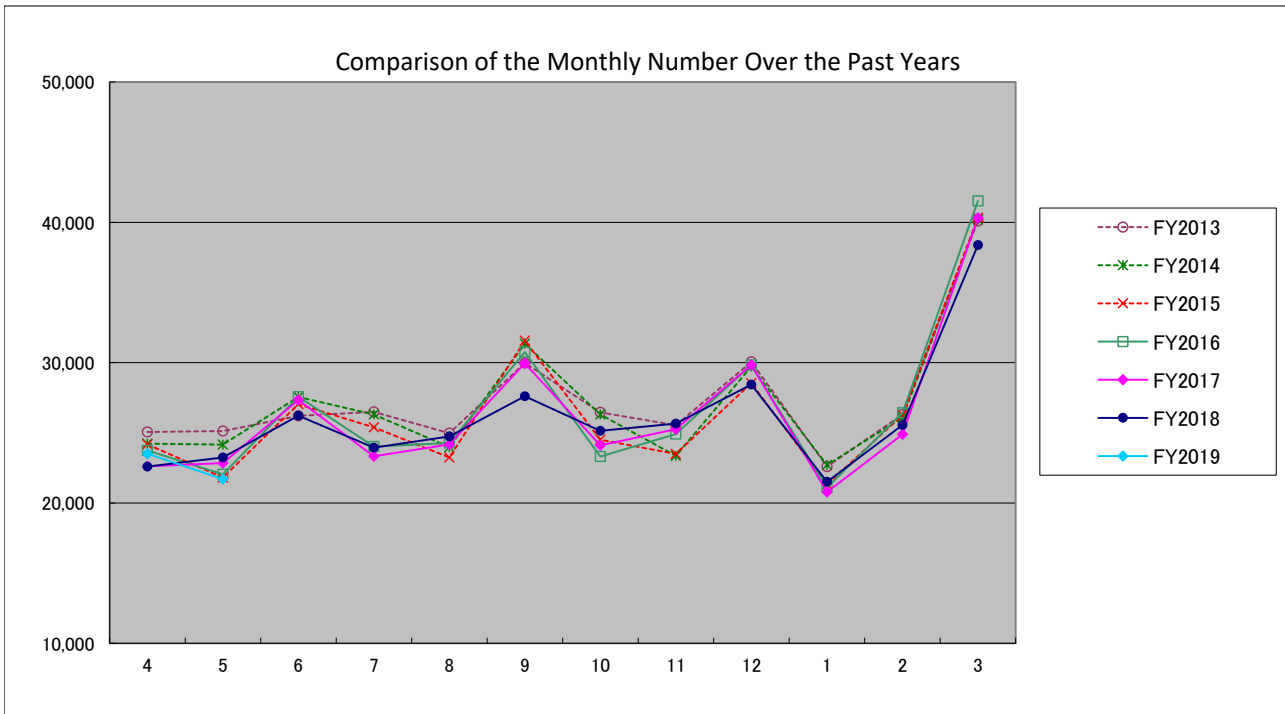
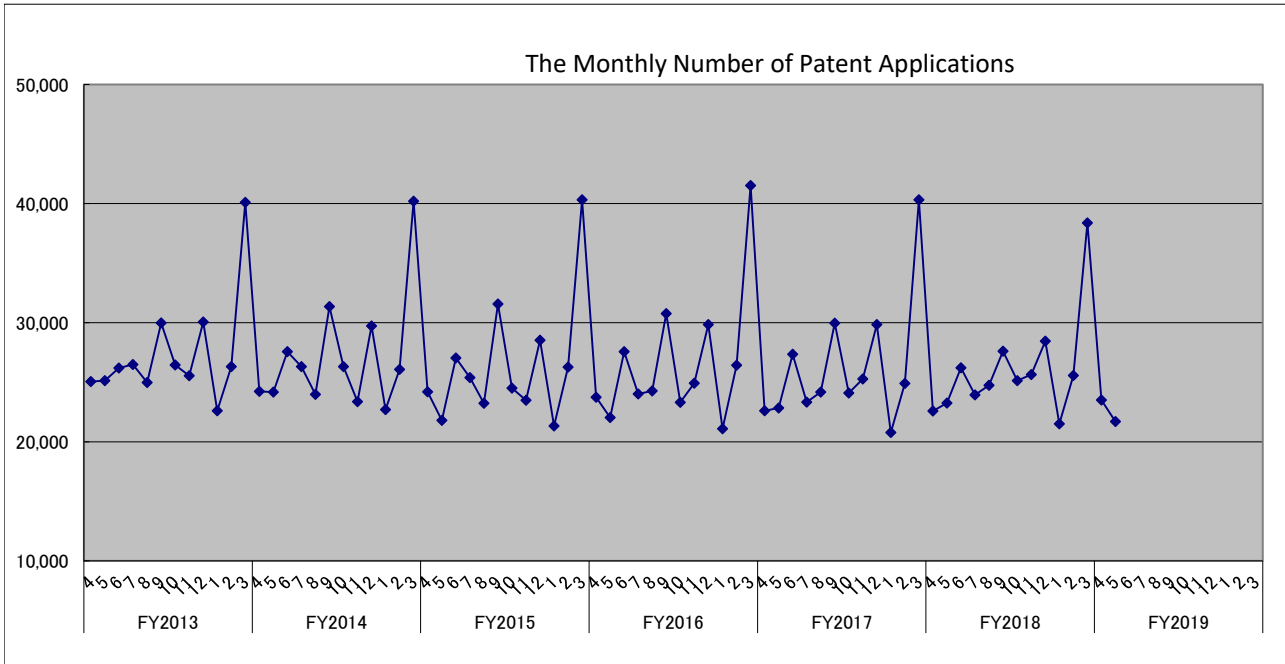


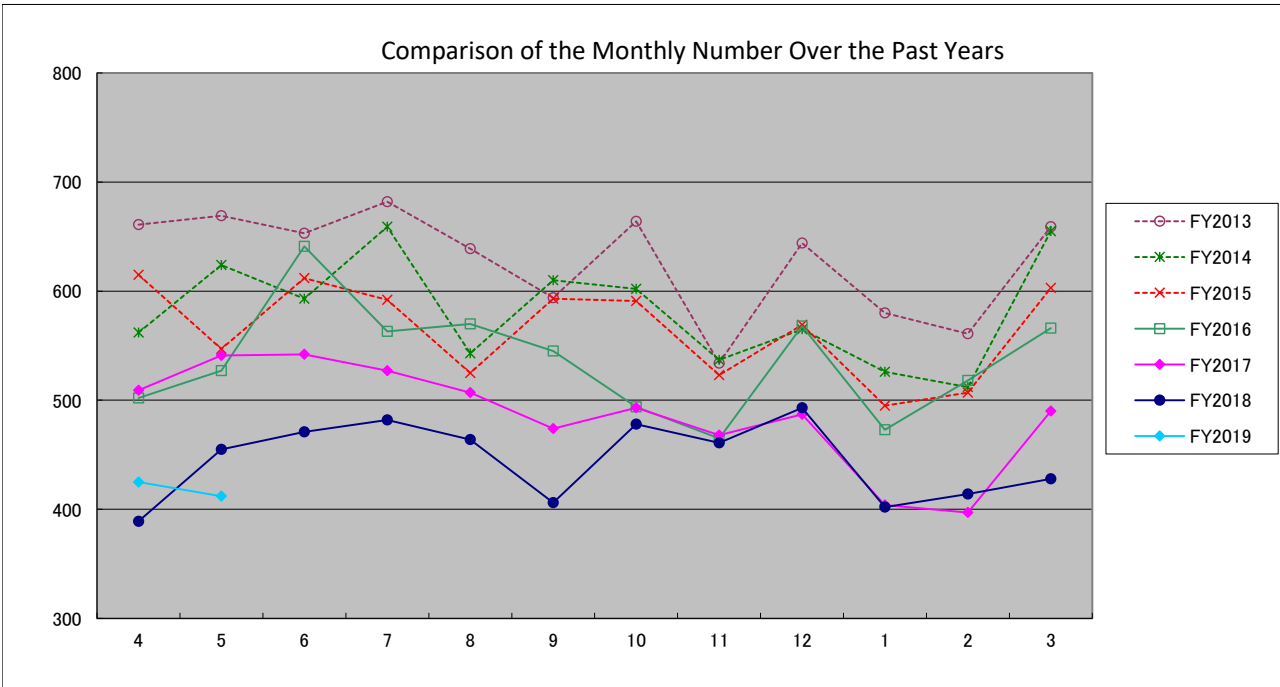
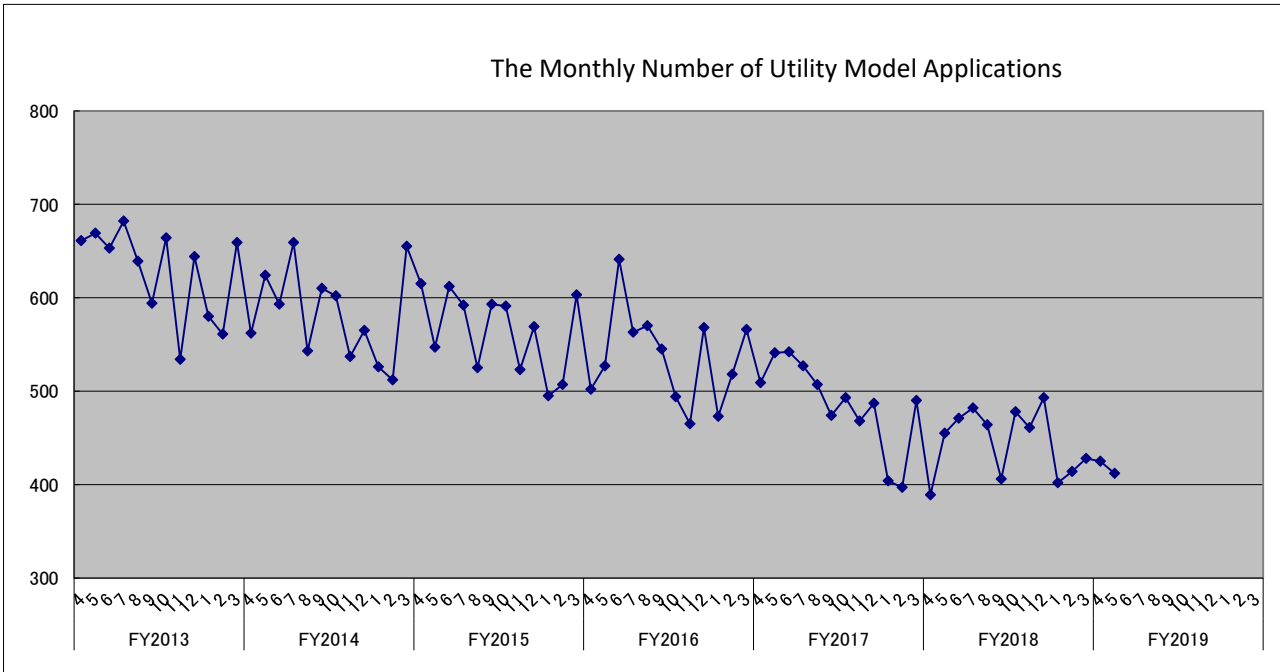
## The Number of Patent Applications

\*The preliminary data are tentatively compiled figures based on the JPO Statistical Database.  
Please be noted that the data may be subject to change through continual data collection and processing.



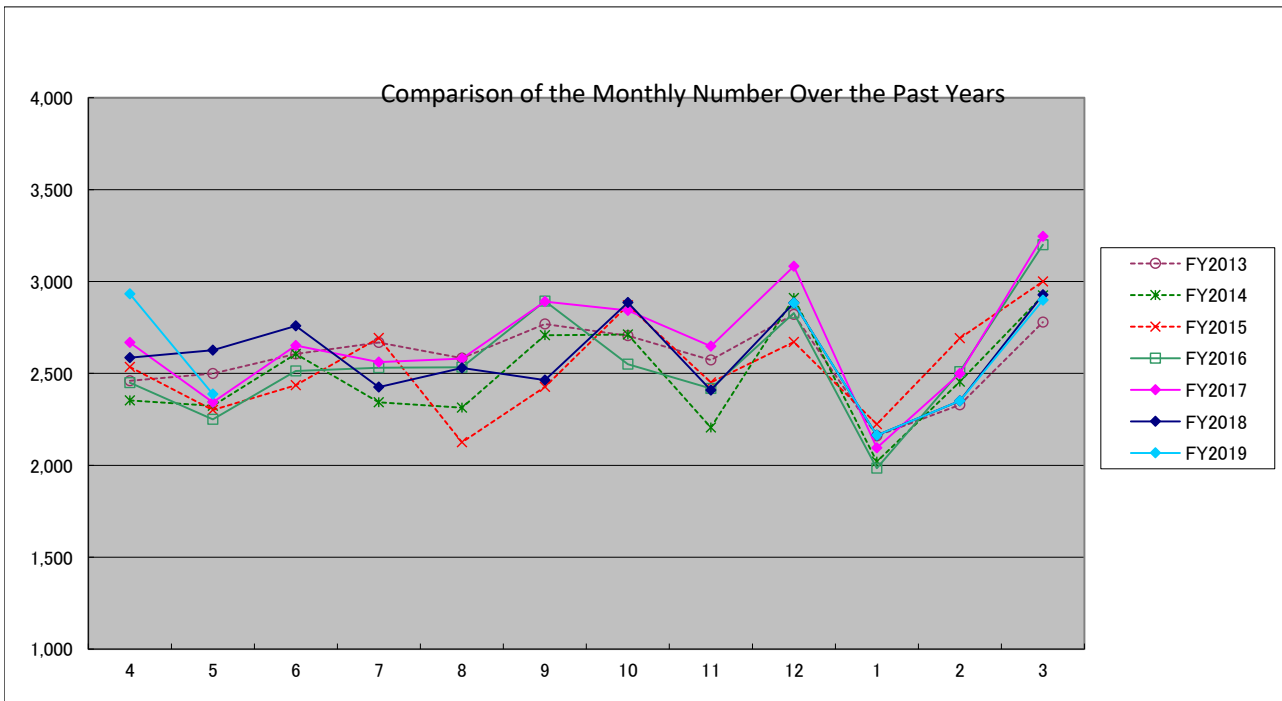
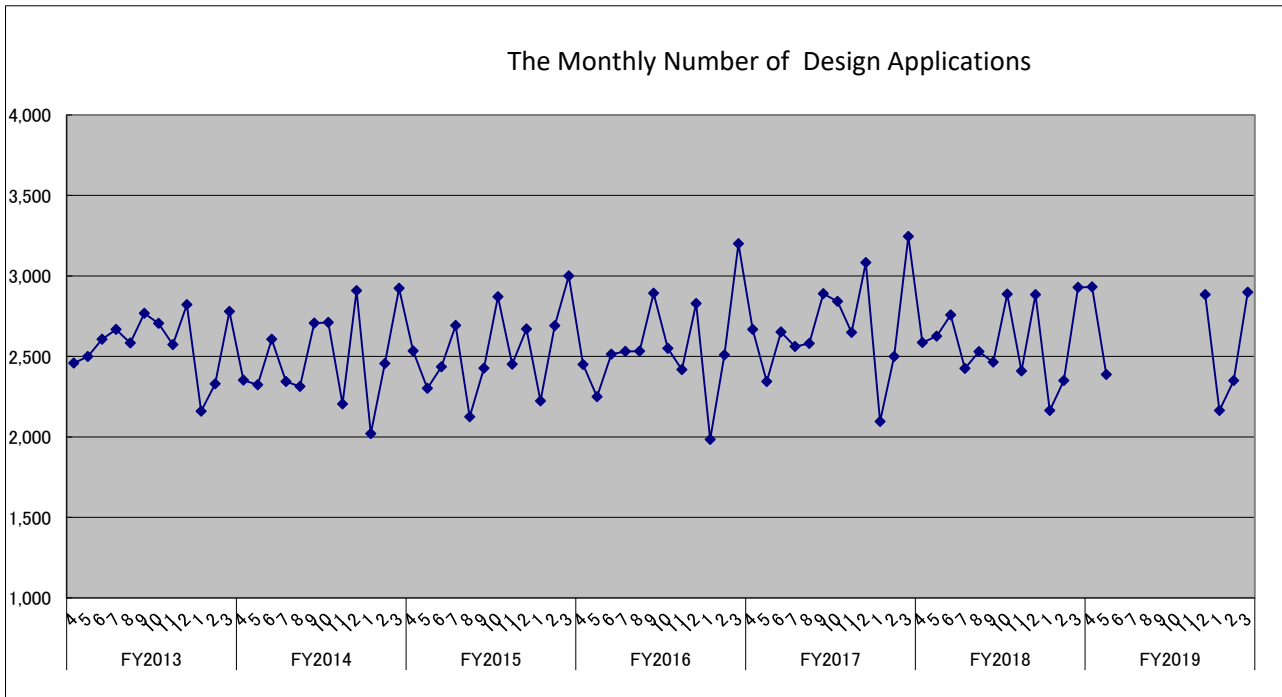
## The Number of Utility Model Applications

\*The preliminary data are tentatively compiled figures based on the JPO Statistical Database.  
Please be noted that the data may be subject to change through continual data collection and processing.



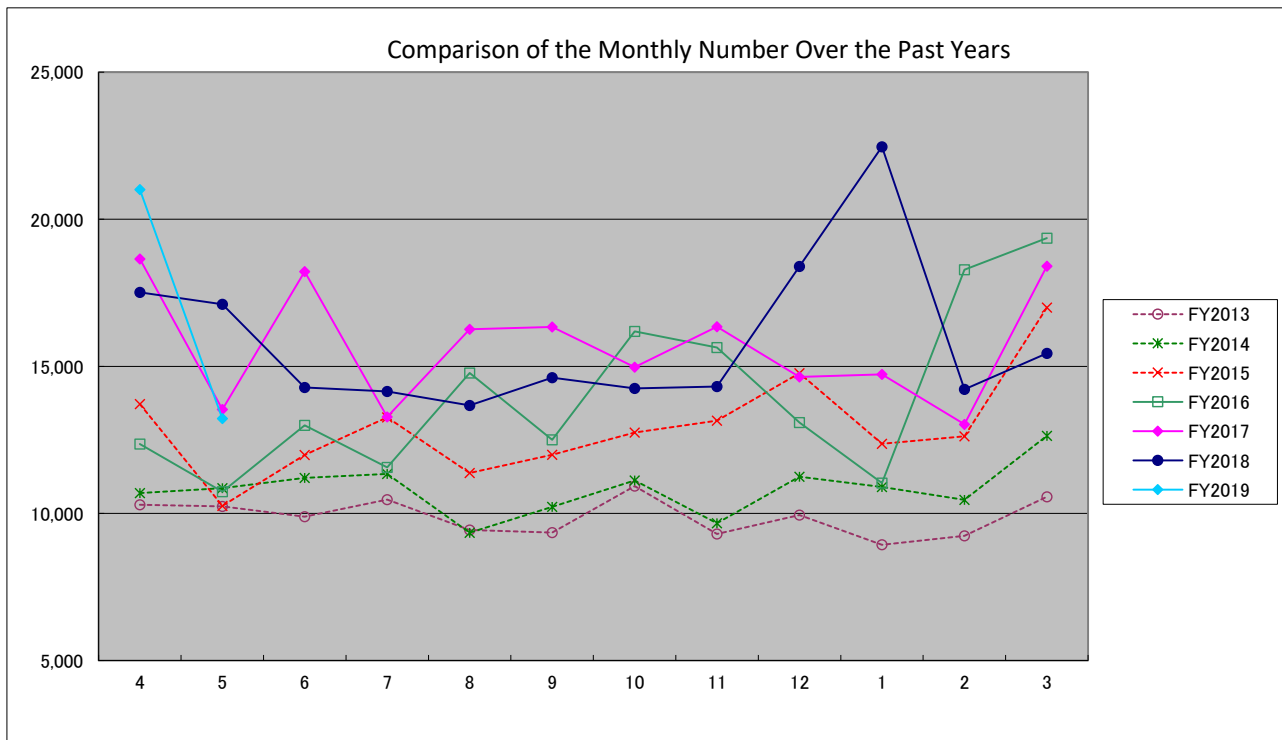
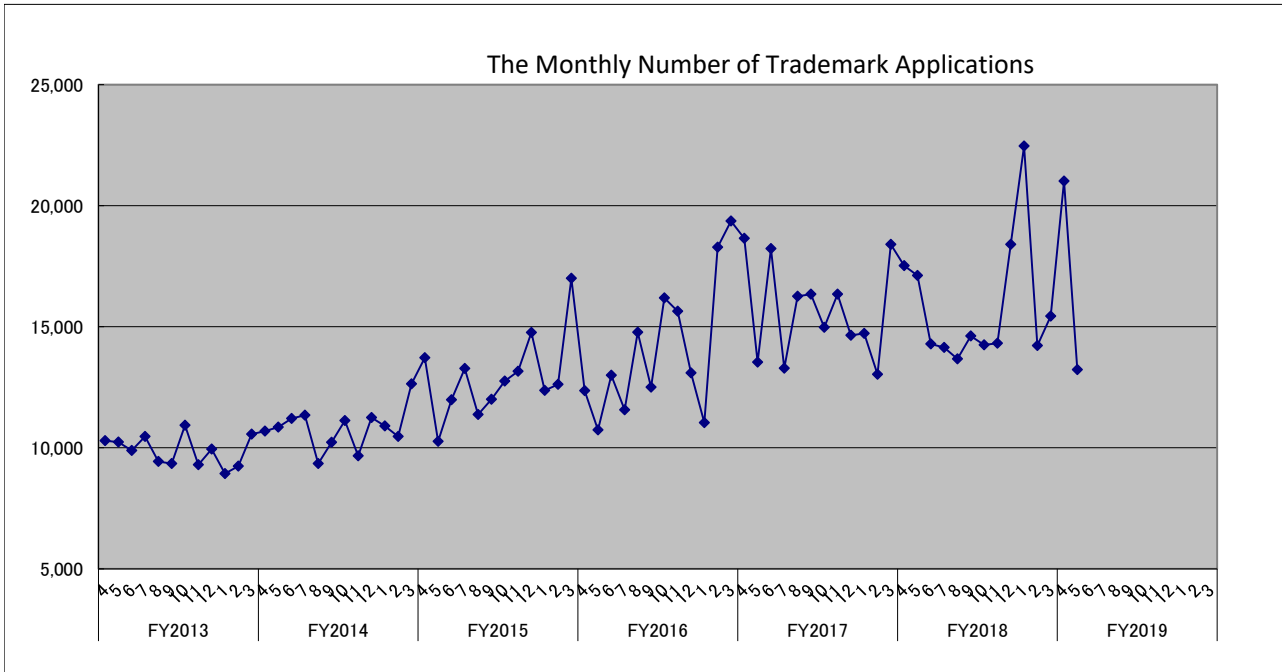
## The Number of Design Applications

\*The preliminary data are tentatively compiled figures based on the JPO Statistical Database.  
Please be noted that the data may be subject to change through continual data collection and processing.



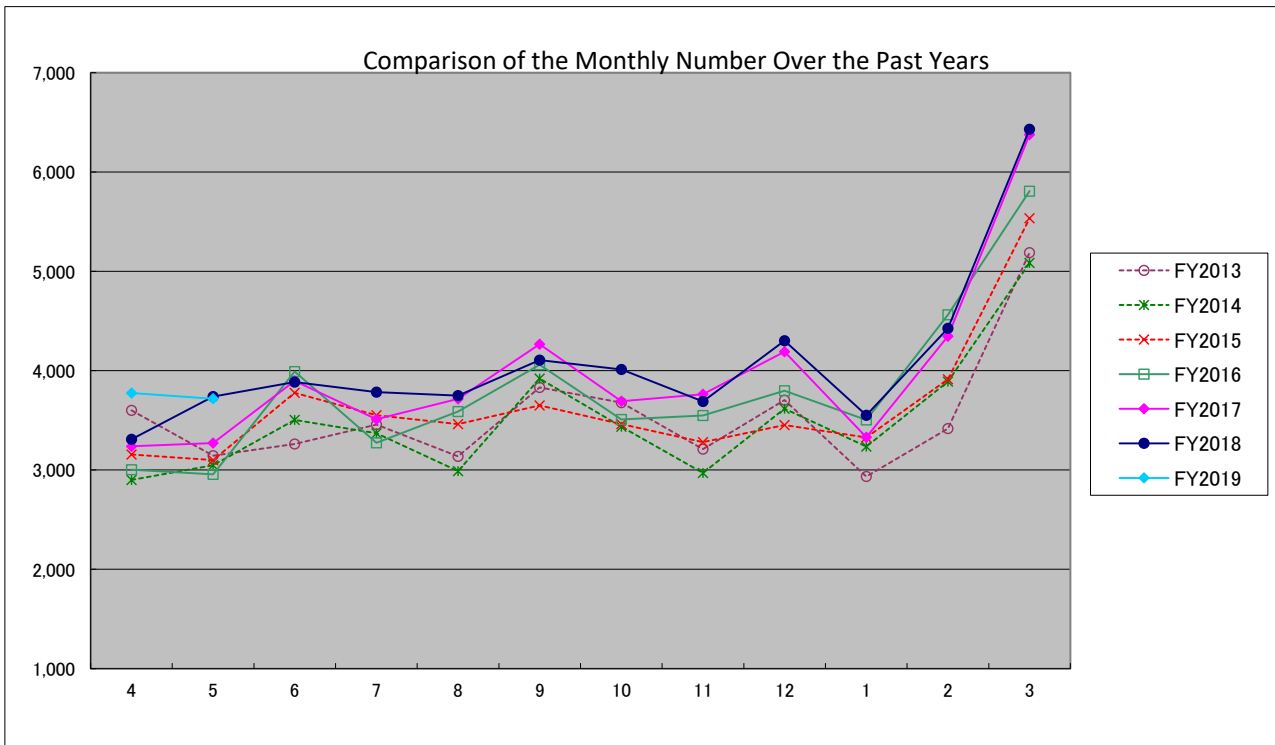
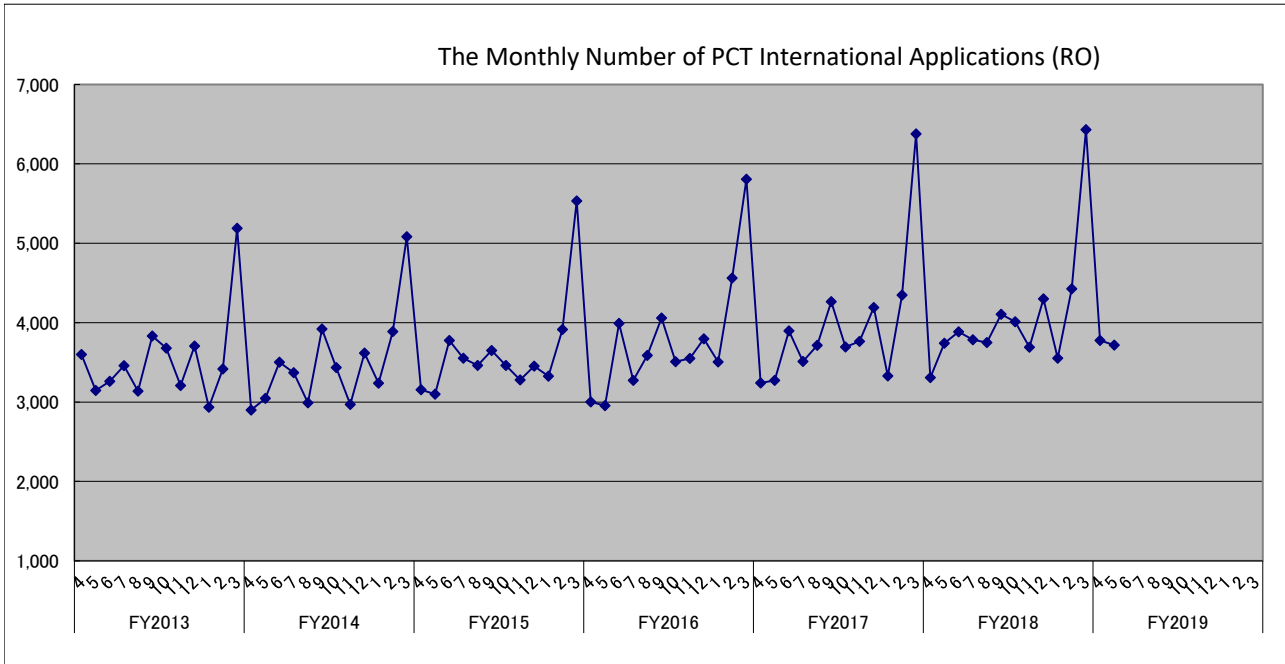
## The Number of Trademark Applications

\*The preliminary data are tentatively compiled figures based on the JPO Statistical Database.  
Please be noted that the data may be subject to change through continual data collection and processing.



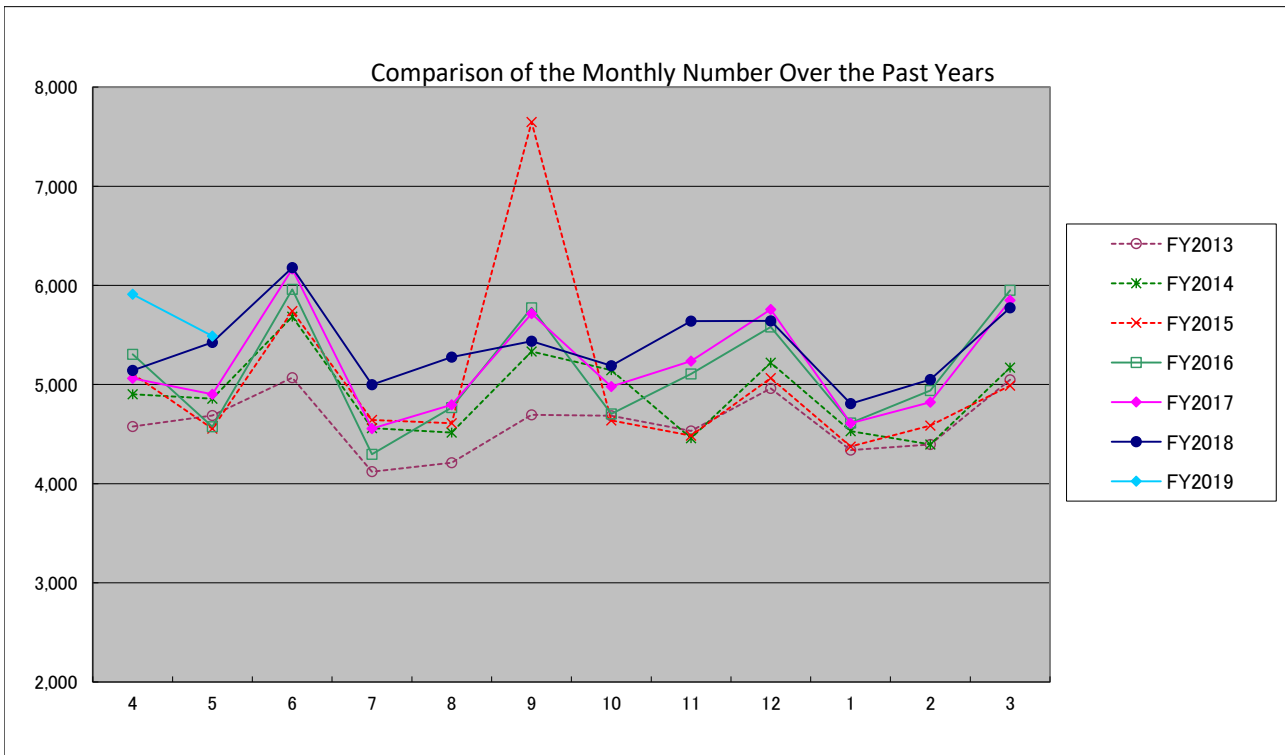
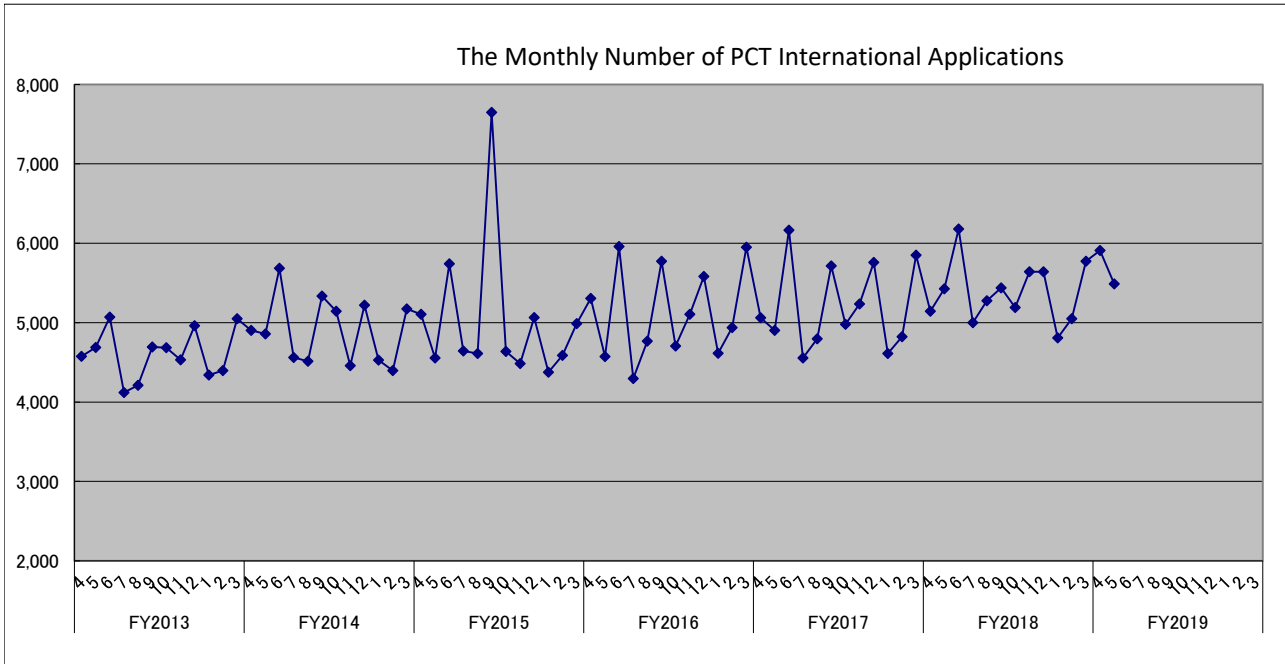
## The Number of PCT International Applications (RO)

\*The preliminary data are tentatively compiled figures based on the JPO Statistical Database.  
Please be noted that the data may be subject to change through continual data collection and processing.



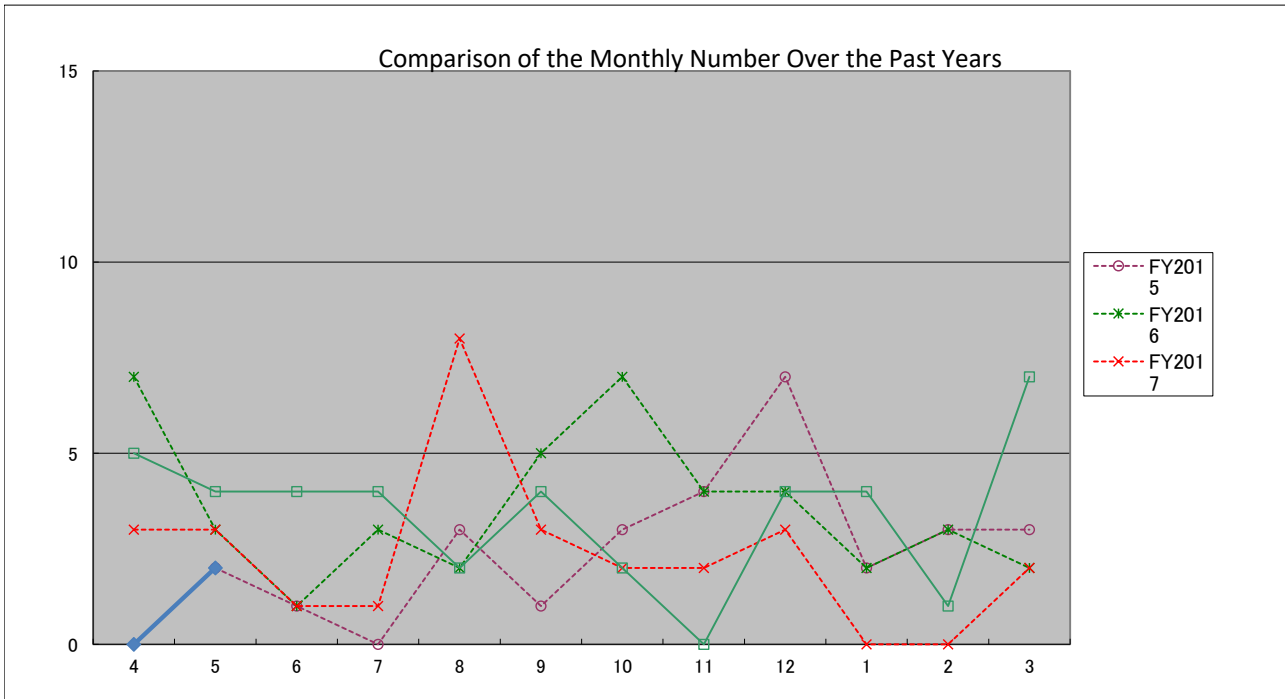
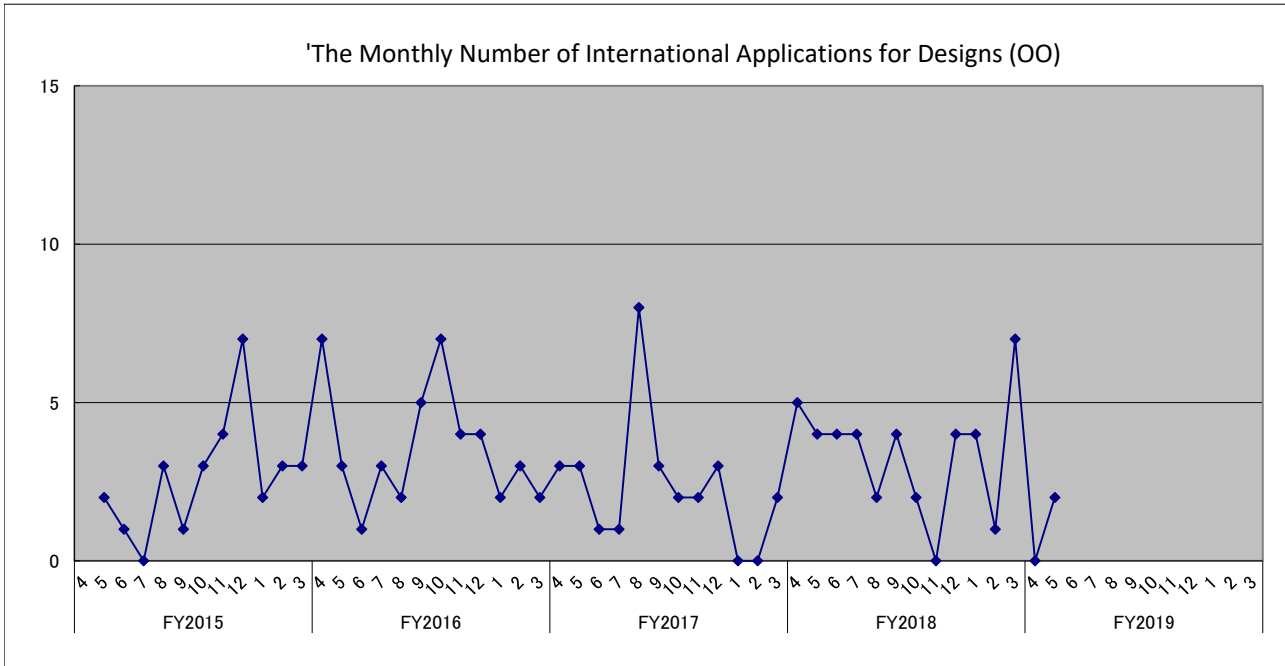
## The Number of PCT International Applications (DO)

\*The preliminary data are tentatively compiled figures based on the JPO Statistical Database.  
Please be noted that the data may be subject to change through continual data collection and processing.



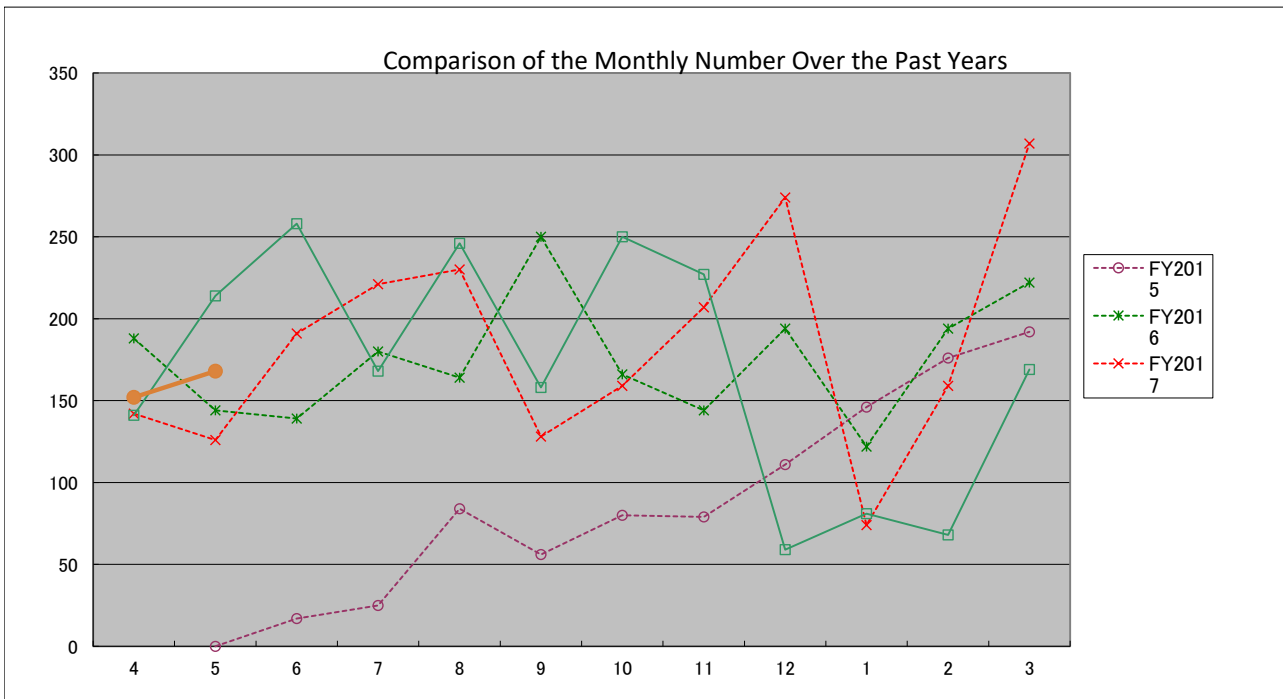
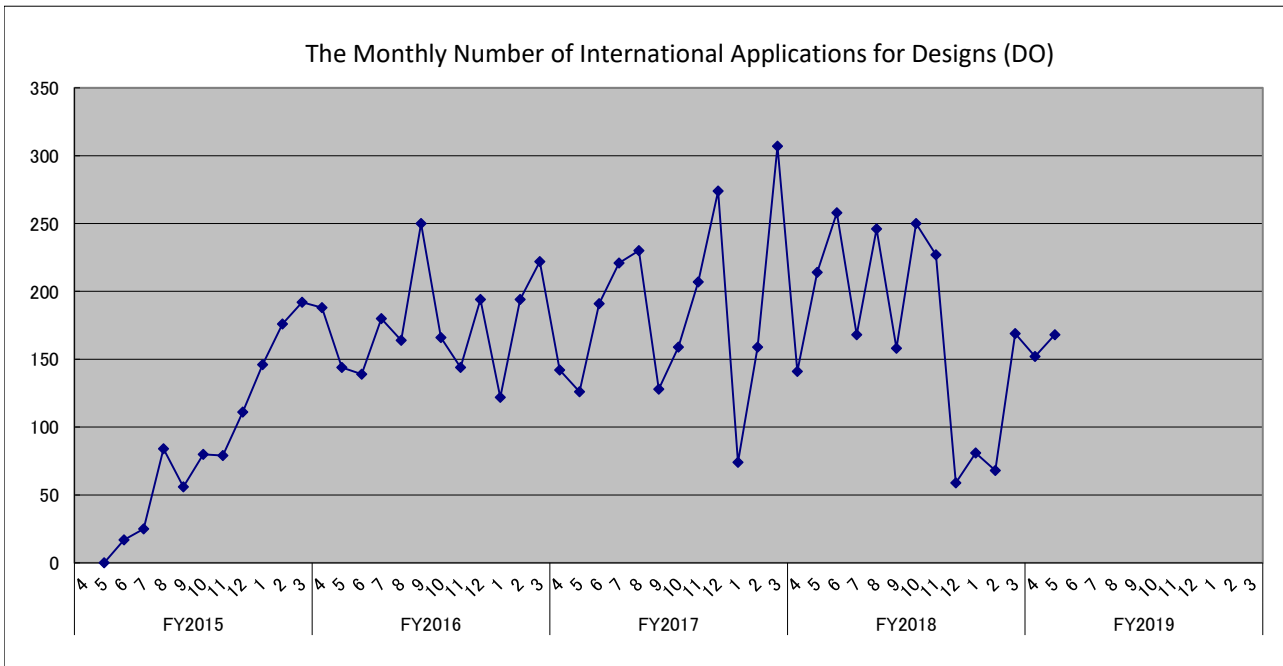
## The Number of International Applications for Designs (OO)

\*The preliminary data are tentatively compiled figures based on the JPO Statistical Database.  
Please be noted that the data may be subject to change through continual data collection and processing.



## The Number of International Applications for Designs (DO)

\*The preliminary data are tentatively compiled figures based on the JPO Statistical Database.  
Please be noted that the data may be subject to change through continual data collection and processing.

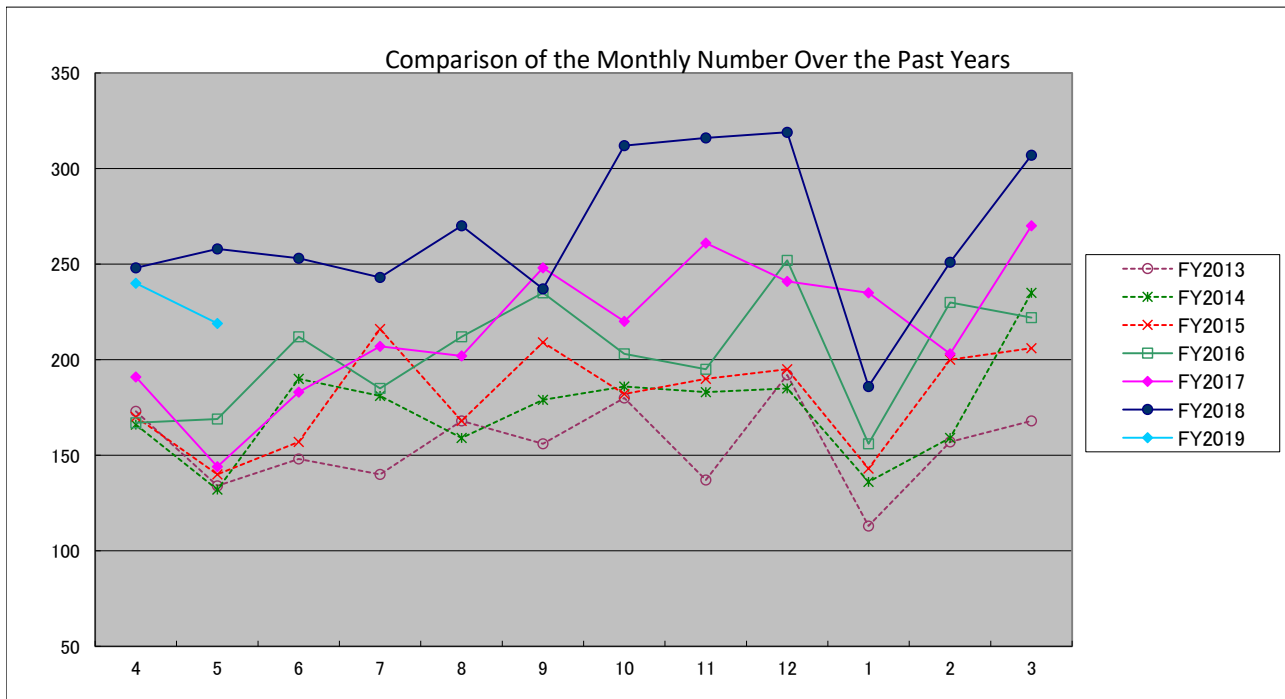
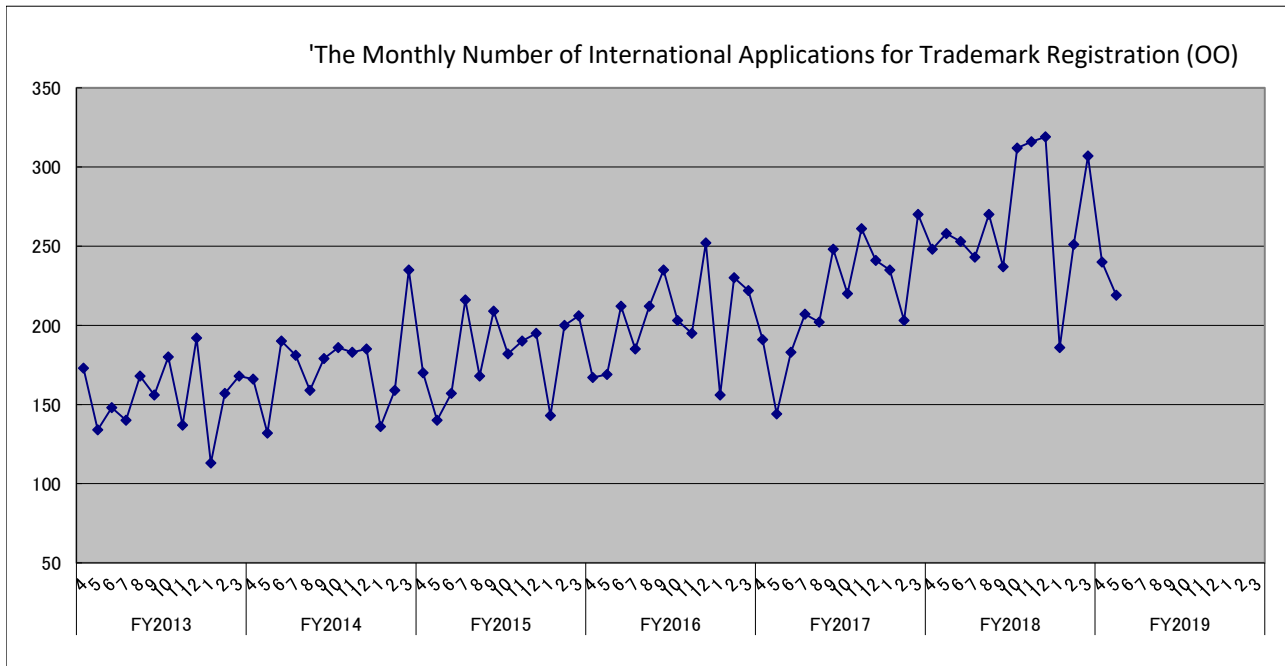




## The Number of International Applications for Trademark Registration (OO)

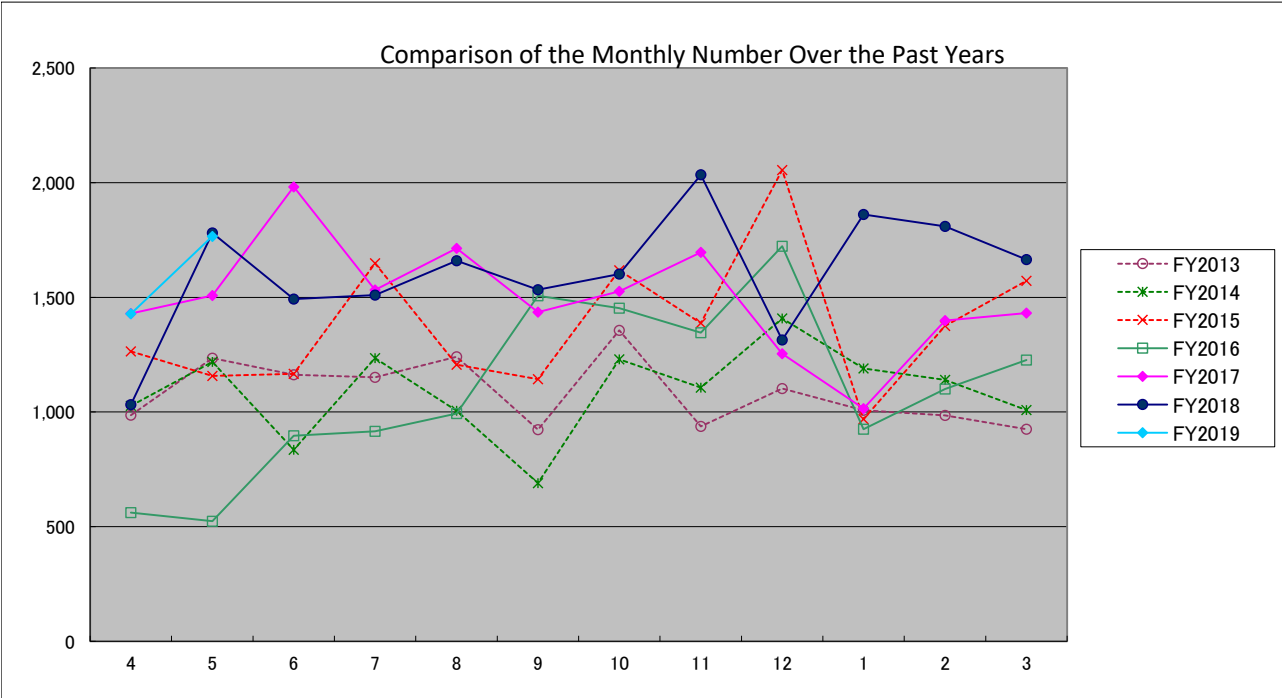
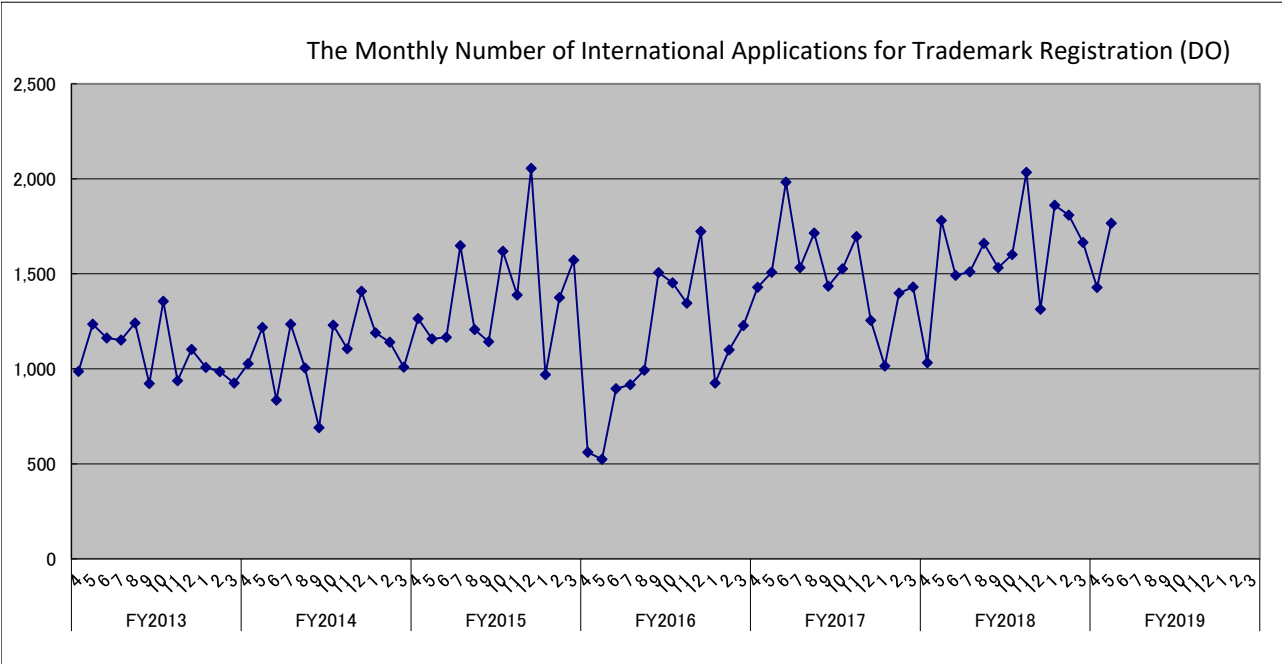
\*The preliminary data are tentatively compiled figures based on the JPO Statistical Database.

Please be noted that the data may be subject to change through continual data collection and processing.



# The Number of International Applications for Trademark Registration (DO)

\*The preliminary data are tentatively compiled figures based on the JPO Statistical Database.  
 Please be noted that the data may be subject to change through continual data collection and processing.



## The Number of Requests for Examination

\*The preliminary data are tentatively compiled figures based on the JPO Statistical Database.  
Please be noted that the data may be subject to change through continual data collection and processing.

