

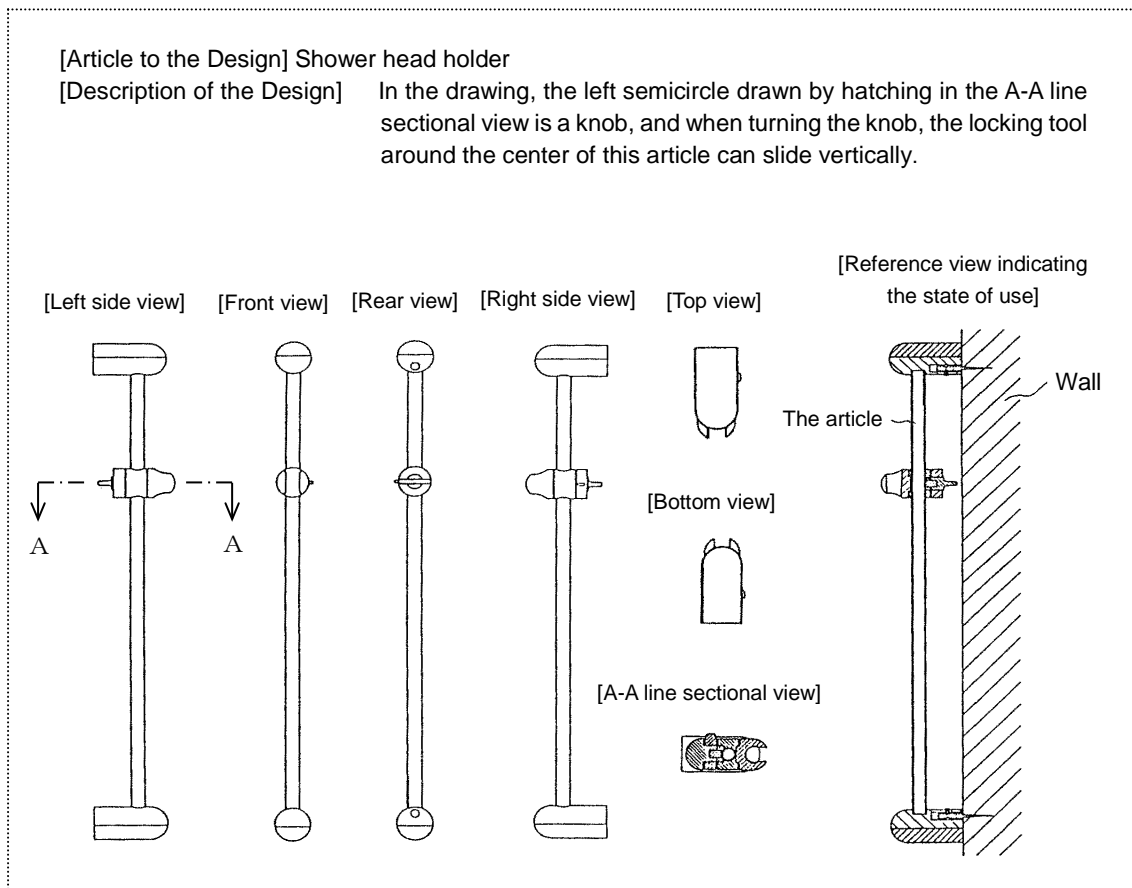
3. Articles having a movable constituent part

3.1 Structure having a movable part

In cases where the entire form of an article is changed when the part of it moves, it is necessary to give an explanation in the column of [Description of the Design] of the application regarding the scope of the moving part, the direction in which the moving part goes, and how it moves. In addition, it is necessary to represent the forms during and after the moving in the drawing, except for the cases where such moving is very common in the field of the article.

For example, in the case of the design of “shower head holder” in Figure 3.3-1, it is possible to understand the structure having a movable part not only through the statement in the column of [Description of the Design] of the application and “a set of six views,” but also through a A-A line sectional view and a reference view indicating the state of use. Through these, it is clarified that, in this design, the locking tool can slide vertically within the scope of the round bar.

<Fig. 3.3-1> Example of how to represent an article having a moving part



3.2 Where the form is changeable by the expansion and contraction of the whole or part of an article

In cases where the form of an article is changed when the whole or part thereof expands or contracts, it is necessary to give an explanation in the column of [Description of the Design] of the application regarding the scope of the expanding/contracting part, and the direction in which the part moves. In addition, it is necessary to represent the forms during and after the expansion/contraction in the drawing, except for the cases where the specific mode of such expansion/contraction is very common in the field of the article.

For example, in the case of the design of “Supporting beam for concrete mold” in Figure 3.3-2, it is possible to understand the mode of expansion/contraction and the different forms before and after the expansion/contraction through the statement in the column of [Description of the Design] of the application and the front view representing the contracted state submitted in addition to “a set of six views.”

<Fig. 3.3-2> Example of how to depict an article having an expanding/contracting part

